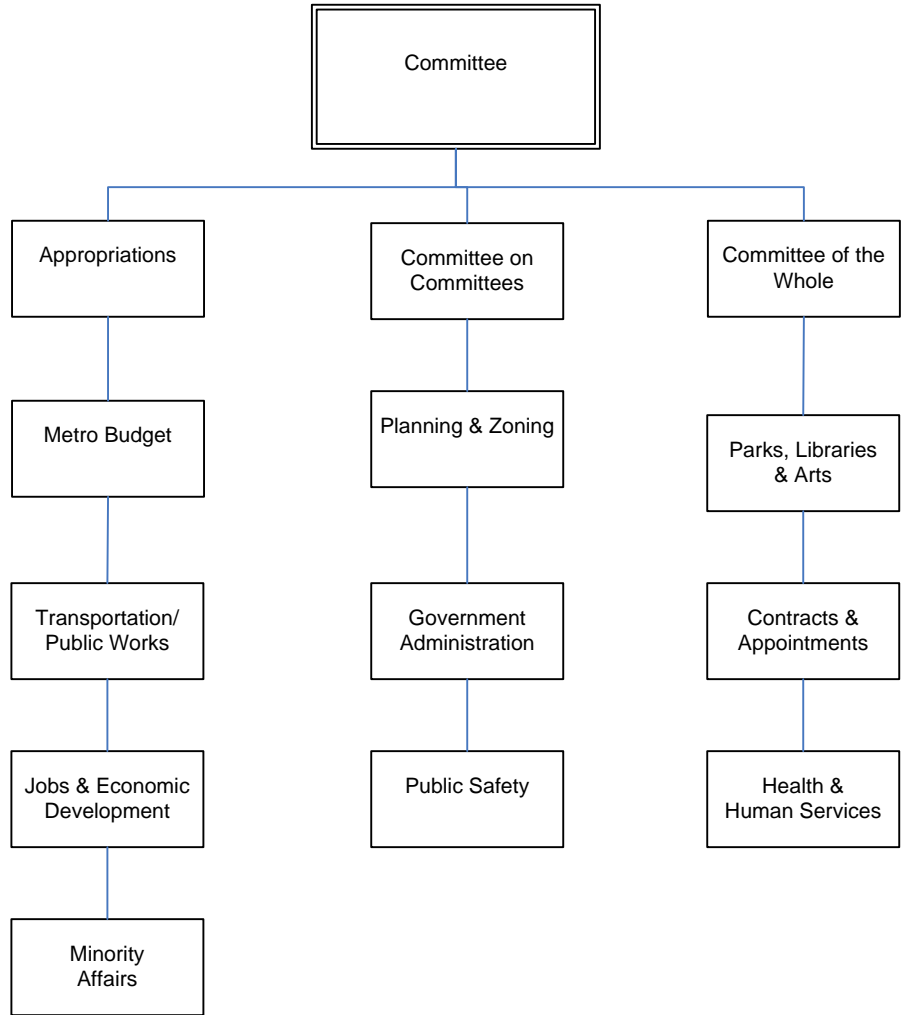




# Metro Council



# METRO COUNCIL

## Mission

To enact legislation, which meets the needs of citizens of Louisville/ Jefferson County.

## Programs and Services

The Metro Council is organized through standing committees, which are: Appropriations, NDFs and CIFs, Metro Budget, Planning & Zoning, Land Design & Development, Parks, Libraries & Cultural Activities, Transportation/Public Works, Government Administration, Rules, Ethics & Audit, Contracts /Appointments, Labor and Economic Development, Public Safety, Health & Human Services, Minority Affairs, Committee on Committees and Committee of the Whole.

## Goals & Indicators

### Goals:

- Provide the legislative oversight and authority for efficient and effective services to all Citizens of Louisville/Jefferson County.
- Provide the legislative authority necessary to achieve the published goals and objectives of the administrative branch of Louisville Jefferson County Metro Government.
- To combine and simplify existing city and county ordinances within five years of merger.

### Indicators:

- All budget adjustments considered by the Council within 30 days of submission by the Administration.
- Perform comparative cost/benefit analysis of services provided by this Government to comparable governments.
- All proposed legislation needed by the Administration is considered by the Council within 60 days.
- Review Administration's status of financial as well as performance reports within 30 days of the close of each quarter.
- Review at least 1/5 of all existing city and county ordinances within the fiscal year.

**Metro Council**

**Budget Summary**

	<b>Prior Year Actual 2005-2006</b>	<b>Original Budget 2006-2007</b>	<b>Revised Budget 2006-2007</b>	<b>Mayor's Recommended 2007-2008</b>	<b>Council Approved 2007-2008</b>
General Fund Appropriation	6,976,300	7,614,300	8,042,400	7,556,600	7,556,600
Agency Receipts	17,700	0	0	0	0
<b>Total Revenue:</b>	<b>6,994,000</b>	<b>7,614,300</b>	<b>8,042,400</b>	<b>7,556,600</b>	<b>7,556,600</b>
Personal Services	4,232,700	4,537,800	4,586,900	4,569,700	4,569,700
Contractual Services	525,000	652,500	652,300	618,500	618,500
Supplies	47,400	70,200	80,300	73,200	73,200
Equipment/Capital Outlay	27,800	57,200	57,100	57,600	57,600
Interdepartment Charges	227,100	346,600	312,800	287,600	287,600
Other Expenses	482,600	0	471,400	0	0
Restricted & Other Proj Exp	0	1,950,000	1,881,600	1,950,000	1,950,000
<b>Total Expenditure:</b>	<b>5,542,600</b>	<b>7,614,300</b>	<b>8,042,400</b>	<b>7,556,600</b>	<b>7,556,600</b>
<b>Expenditures By Activity</b>					
District Operations/NDF Fund	1,129,300	2,786,400	3,227,500	2,825,100	2,825,100
Administration	4,413,300	4,827,900	4,814,900	4,731,500	4,731,500
<b>Total Expenditure:</b>	<b>5,542,600</b>	<b>7,614,300</b>	<b>8,042,400</b>	<b>7,556,600</b>	<b>7,556,600</b>

<b>Metro Council</b>	<b>Position Detail</b>	
	Mayor's Recommended FY2007-2008	Council Approved FY2007-2008
<b>Position Allocation (in Full-Time Equivalent)</b>		
<b>Full-time</b>	<b>70</b>	<b>73</b>
<b>Permanent Part-time</b>	<b>3</b>	<b>3</b>
<b>Seasonal/Other</b>	<b>36</b>	<b>36</b>
<b>Total Positions</b>	<b>109</b>	<b>112</b>

***Position Title***

Administrative Assistant	3	3
Administrative Clerk	4	5
Administrative Specialist	2	3
Business Advisor	1	0
Business Manager	1	1
Business Specialist	1	1
Caucus Director	0	2
Director of Communications	0	2
Director of Operations	1	1
Financial Advisor	0	1
Legislative Aide	13	12
Legislative Assistant	14	14
Metro Council Assistant Clerk	4	4
Metro Council Clerk	1	1
Metro Council Member	26	26
Public Information Specialist	1	0
Researcher	1	0
Staff Helper/Internal	36	36