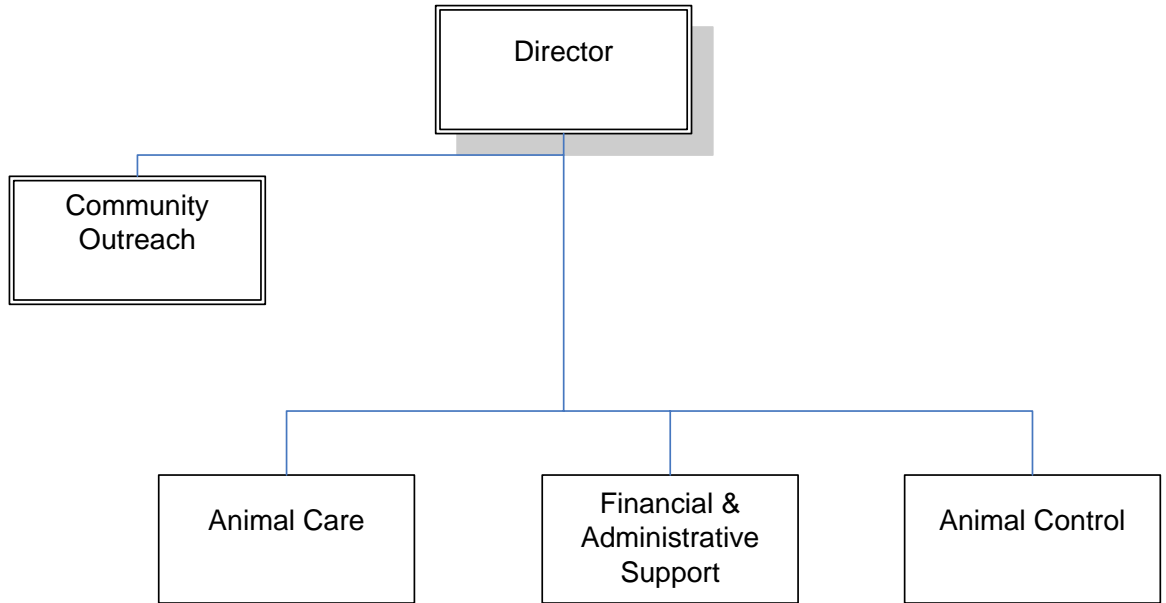




Metro Animal Services



METRO ANIMAL SERVICES

Department Mission

Metro Animal Services is dedicated to protecting the health and safety of all humans and animals as they relate to each other in the community. With the utmost courtesy and professionalism all suspected situations of animal cruelty and/or neglect are investigated, aspects of the ordinance that governs animal behavior are enforced, the ownership responsibilities and accurate license information on all individual animals and businesses are maintained. The agency educates the community regarding responsible pet care through programs and services that teach pet owners how and why it is important to be part of the responsible pet owning community. Professional care and medical attention is given to all animals impounded or received by Metro Animal Services. Innovative and proactive programs that will eliminate the largest cause of cruelty, pet overpopulation, and fulfill the need of spay/neuter services for financially challenged individuals are created. The department strives for the adoption of as many adoptable animals as responsibly possible or favor their return to their family. The department seeks to generate enough revenues to become financially self-sufficient. Metro Animal Services also is striving to become the Animal Care authority in the community and the leader in creating a responsible pet owning community.

Programs and Services

Finance and Administration Support Services – Oversee the operations, programs and services of the Metro Animal Services Department.

Animal Care – Provide on-site shelter and care for stray and unwanted dogs and cats. Provide adoption services, find new appropriate homes for animals, and provide quarantine services for the observation of symptoms of rabies in animals that have bitten humans.

Animal Control – Provide enforcement of the Metro Animal Control ordinance throughout Metro Louisville by animal control officers. These enforcement efforts encompass nuisance complaints such as barking, running loose, etc., as well as serious situations such as intentional cruelty or harboring a dangerous dog.

METRO ANIMAL SERVICES

Goals & Indicators

- **Decrease euthanasia of adoptable animals**
 - Increase adoption hours opened to the public.
 - Strengthen the quality of our services to future adopters.
 - Provide a more accessible and attractive environment to the public who are viewing adoptable animals.
 - Establish a behavior assessment program for every animal unclaimed by their owners.
 - Create a foster program for Metro Animal Services (MAS) animals.
 - Promote MAS as the first place to look for a new companion or to retrieve your lost animal.
 - Afford the maximum chance for every adoptable animal to be adopted.
 - Facilitate off-site adoption with Stop Pet Overpopulation Today (SPOT), our mobile clinic.
- **Reduce pet overpopulation**
 - Institute spay/neuter programs to reach the pets' owners who are responsible for overpopulation.
 - Assist with SPOT, our mobile clinic, off-site spay/neuter programs and related education.
 - Strengthen the animal ordinance on irresponsible breeding.
 - Launch humane education seminars favoring responsible pet ownership.
- **Provide a better environment for all impounded animals**
 - Put in place a cleaning and disinfecting protocol.
 - Manage a veterinary prevention program.
 - Create a volunteer program to provide special attention (walks, training, blankets, toys, play time, etc.) to impounded animals.
- **Establish a strong community outreach program**
 - Administer an educational school program adapted to each grade level.
 - Participate in a larger number of community events.
 - Create public awareness campaign to educate.
 - Develop web-based information group.
 - Establish strong volunteer program.
 - Create a business plan for SPOT.
 - Establish a strong customer service standard.

METRO ANIMAL SERVICES

Goals & Indicators (continued)

- Improve neighborhood protection against animal nuisance, cruelty and aggressive dogs.
 - Strengthen the animal ordinance relating to irresponsible owners and breeders.
 - Create an investigation team on animal cruelty, neglect and various forms of abuse, i.e. dog fighting.
 - Institute animal control unit to increase effectiveness.
 - Stimulate and allow more field investigations.
 - Intensify animal control officer training.
 - Work with LMPD and address problem areas within each district and promote education and enforcement.
 - Attend more neighborhood meetings and educate the public on ways they can assist in resolving animal issues.

Metro Animal Services

Budget Summary

	Prior Year Actual 2004-2005	Original Budget 2005-2006	Revised Budget 2005-2006	Mayor's Recommended 2006-2007	Council Approved 2006-2007
General Fund Appropriation	1,210,200	1,391,900	1,552,500	1,745,600	1,845,600
Agency Receipts	688,000	691,900	721,900	722,800	722,800
Total Revenue:	1,898,200	2,083,800	2,274,400	2,468,400	2,568,400
Personal Services	1,472,400	1,626,300	1,674,000	1,839,100	1,939,100
Contractual Services	217,300	220,400	290,000	176,100	176,100
Supplies	78,100	77,100	96,300	95,700	95,700
Interdepartment Charges	114,900	0	184,100	326,600	326,600
Restricted & Other Proj Exp	0	160,000	30,000	30,900	30,900
Total Expenditure:	1,882,700	2,083,800	2,274,400	2,468,400	2,568,400
Expenditures By Activity					
Director's Office	190,900	145,100	165,100	225,500	225,500
Finance & Administration Services	501,700	582,800	655,600	747,600	747,600
Kennel Services	437,400	514,500	557,500	598,400	598,400
Field Services	752,700	841,400	896,200	896,900	996,900
Total Expenditure:	1,882,700	2,083,800	2,274,400	2,468,400	2,568,400

Metro Animal Services	Position Detail	
	Mayor's Recommended FY2006-2007	Council Approved FY2006-2007
Position Allocation (in Full-Time Equivalents)		
Full-Time	43	47
Permanent Part-Time	0	0
Seasonal/Other	0	0
Total Positions	43	47
Programs		
Director's Office		
Full-Time	2	2
Permanent Part-Time	0	0
Seasonal/Other	0	0
Total Positions	2	2
Title		
Director	1	1
Assistant Director	1	1
Finance & Administration Services		
Full-Time	8	10
Permanent Part-Time	0	0
Seasonal/Other	0	0
Total Positions	8	10
Title		
Assistant Director	1	1
Business Manager I	1	1
Business Clerk	2	2
Animal Control Clerk	3	3
Public Education Coordinator	1	1
Adoption Specialist	0	2
Animal Care		
Title		
Full-Time	13	14
Permanent Part-Time	0	0
Seasonal/Other	0	0
Total Positions	13	14
Title		
Animal Control Incin Operator	1	1
Animal Care Manager	1	1
Animal Care Specialist	9	9
Veterinarian	1	1
Veterinary Technician	1	2

Animal Control

Full-Time	20	21
Permanent Part-Time	0	0
Seasonal/Other	0	0
Total Positions	20	21
Title		
Animal Control Dispatcher	4	4
Animal Services Supvsr	1	1
Animal Control Officer II	3	3
Animal Control Officer I	12	13