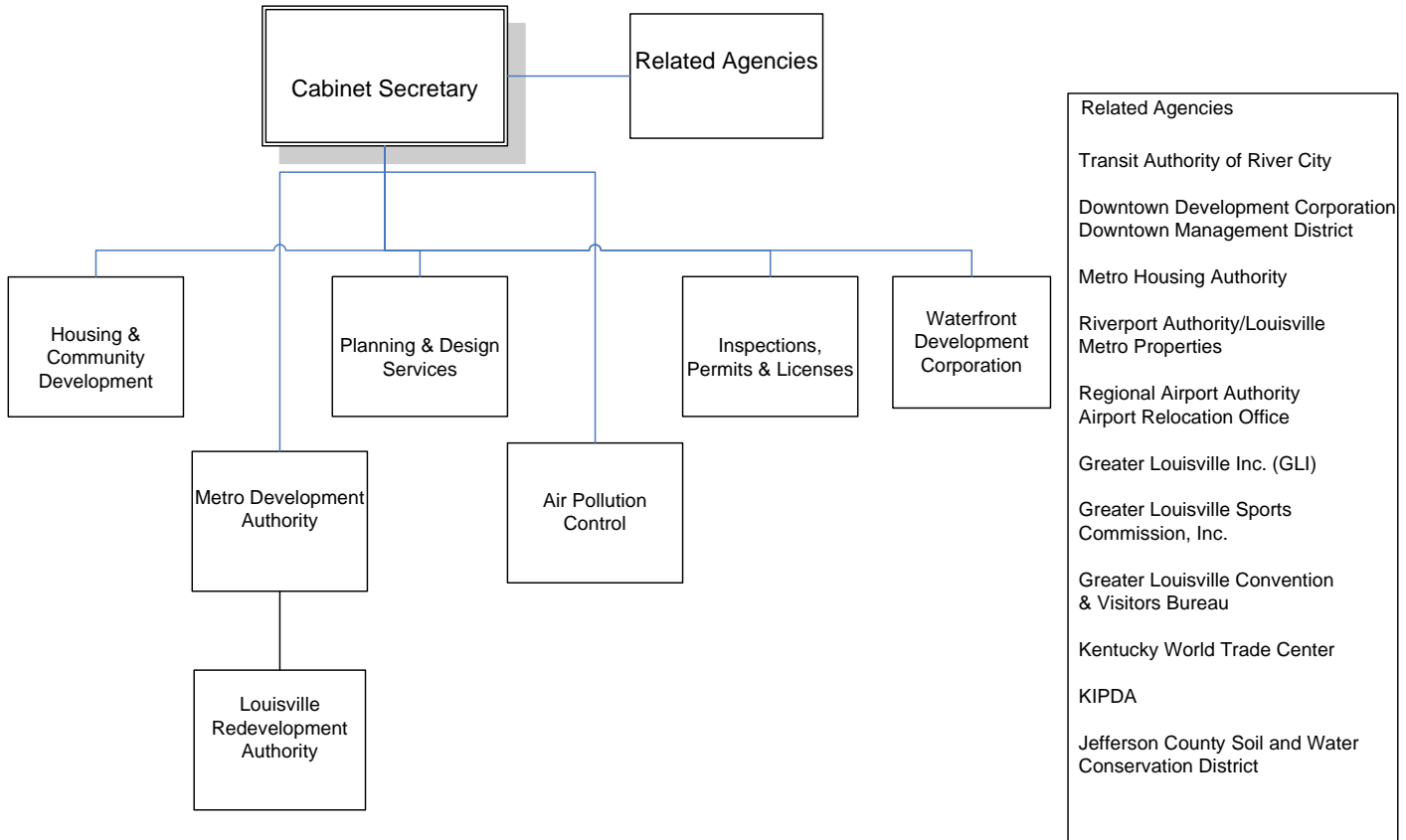




# Cabinet for Community Development



## **CABINET FOR COMMUNITY DEVELOPMENT**

### **Cabinet Mission**

The Cabinet for Community Development was formed to meet Mayor Abramson's goals of growing jobs, promoting a wide variety of housing choice, reviving our older retail resources, managing growth, and enhancing the environment in order to improve the quality of life of all citizens in Louisville Metro.

### **Departments & Services**

Metro Development Authority  
Planning & Design Services  
Housing & Community Development  
Inspections, Permits and Licenses  
Air Pollution Control District  
Waterfront Development Corporation  
Redevelopment Authority

## Community Development Cabinet

## Budget Summary

	Prior Year Actual 2003-2004	Original Budget 2004-2005	Revised Budget 2004-2005	Mayor's Recommended 2005-2006	Council Approved 2005-2006
General Fund Appropriation	16,781,500	17,965,700	18,170,000	18,577,600	18,657,600
Agency Receipts	12,496,200	72,771,200	26,502,300	77,478,700	77,478,700
Federal Grants	9,627,400	11,455,700	12,753,000	10,833,500	10,833,500
State Grants	1,065,900	2,070,800	1,778,900	2,557,000	2,557,000
Total Revenue:	39,971,000	104,263,400	59,204,200	109,446,800	109,526,800
Personal Services	20,609,300	49,966,000	22,277,200	52,921,300	52,921,300
Contractual Services	12,279,400	38,483,200	18,156,400	30,193,500	30,273,500
Supplies	452,000	4,324,800	646,300	5,702,000	5,702,000
Equipment/Capital Outlay	403,900	341,800	600,900	540,800	540,800
Interdepartment Charges	4,337,300	740,300	10,627,700	6,011,400	6,011,400
Restricted and Other Project Expenditure	0	10,407,300	6,895,700	14,077,800	14,077,800
Total Expenditure:	38,081,900	104,263,400	59,204,200	109,446,800	109,526,800
Expenditures By Activity					
Office of Cabinet Secretary	3,014,200	51,474,100	3,759,300	55,733,000	55,733,000
Metro Development Authority	9,637,900	16,921,000	17,634,400	23,603,000	16,531,700
Planning & Design Services	2,994,800	3,285,100	3,520,700	4,041,500	4,041,500
Housing & Community Development	6,031,500	9,145,000	10,469,700	7,497,400	7,577,400
Inspections, Permits & Licenses	7,918,700	8,483,400	8,550,100	9,052,200	9,052,200
Air Pollution Control District	4,137,700	6,061,900	6,061,900	5,952,300	5,952,300
Waterfront Development Corporation	1,822,600	3,153,900	3,469,100	3,567,400	3,567,400
Redevelopment Authority	2,524,500	5,739,000	5,739,000	0	7,071,300
Total Expenditure:	38,081,900	104,263,400	59,204,200	109,446,800	109,526,800