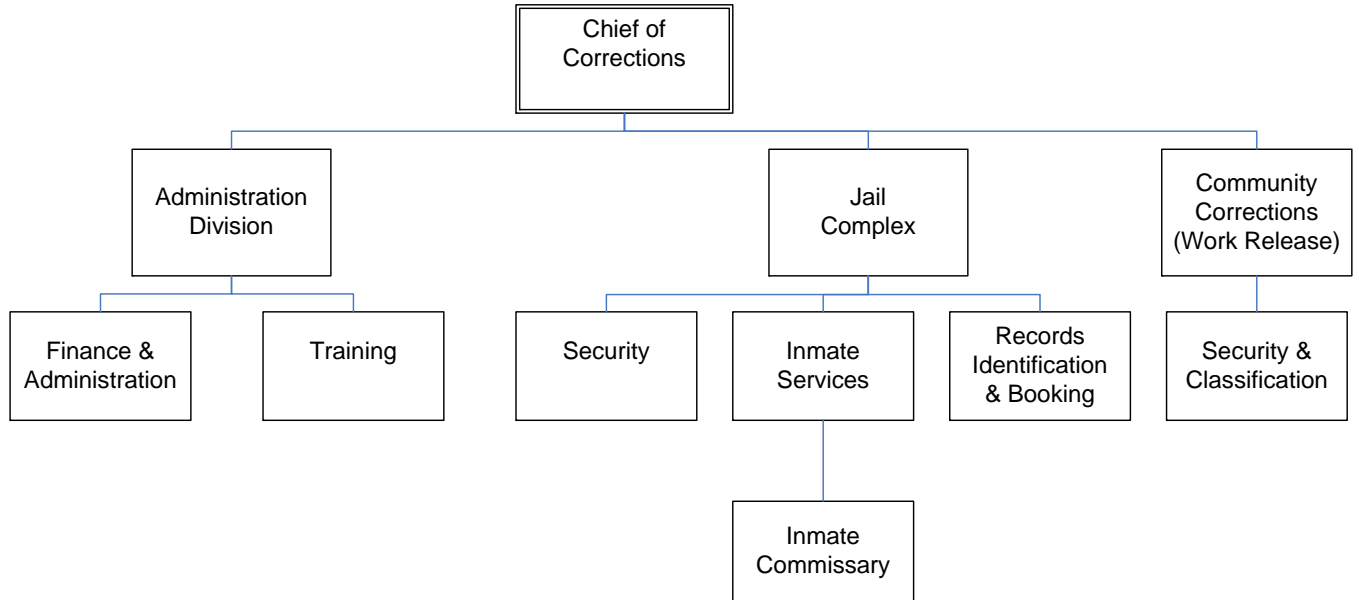




Metro Corrections



METRO CORRECTIONS

Mission

Vision: Metro Corrections (LMDC) is an innovative leader within the Corrections profession, and is an integral component of the criminal justice system. The Louisville-Metro community is a safer place to live and work because Metro Corrections provides services and programs that allow for appropriate management and supervision of offenders.

Mission: Metro Corrections enhances public safety by controlling and managing offenders in a safe, humane, and cost-efficient manner, consistent with sound correctional principles and constitutional standards.

LMDC is committed to excellence, emphasizing accountability, diversity, integrity and professionalism. LMDC will assess an offender's needs and provide services that assist the offender in transition and reintegration back into the community.

Programs and Services

Finance & Administration: Support operations through budgeting, payroll, purchasing, human resources and accreditation status oversight. Provide effective information management and media relations. Conduct internal affairs investigations when required.

Training: Ensure all staff are trained in the skills necessary to effectively carry out the duties and responsibilities of their respective positions.

Security: Ensure the safety of the public, employees and inmates by operating safe and secure facilities.

Inmate Services: Provide quality services for the inmate population that include education, job training, substance abuse/alcohol counseling, domestic violence counseling, reentry preparation and spiritual needs. Operate a Home Incarceration Program (HIP), a Work Release Program and administer a twelve-week parenting and personal responsibility program called Turning It Around (TIA). Monitor compliance for individuals who are court ordered to participate in anger management and substance abuse counseling in our Court Monitoring Center (CMC).

Records, Identification & Booking: Secure personal property during incarceration and maintain current, accurate records of all inmates through a system of booking and release recorded in the Inmate Management System.

Community Corrections Center: Operate a restricted custody facility with emphasis placed on work release, reentry and transitional services.

METRO CORRECTIONS

Goals & Indicators

Provide a safe and secure detention facility. Provide alternative detention sanctions for qualified individuals to lessen the direct negative impact on their lives and the community. Provide proper training for Corrections staff in the performance of their duties. Provide health care and proper nutrition in accordance with KRS and jail standards. Provide proper treatment as mandated by the courts, KRS and jail standards.

Goal #1: LMDC will create and constantly enforce practices to ensure a safe and healthy environment in all areas of operation by meeting or exceeding required requirements.

Measurements:

Objective #1 LMDC will ensure compliance with Kentucky Administrative Regulations and Jail Standards. Facility inspections will be conducted on a minimum of twice a year.

Objective #2 LMDC will progress to achieve ACA accreditation by developing and implementing policies, procedures and post orders in compliance with Fourth Edition Standards.

Objective #3 LMDC will develop and implement a comprehensive emergency plan manual and training schedule to educate staff.

Goal #2: LMDC will promote the Correctional profession and implement a staff development program that includes educational and training opportunities.

Measurements:

Objective #1 LMDC will ensure continuation of ACA accreditation of the LMDC Training Academy.

Objective #2 LMDC shall promote a mentoring culture by providing formal training programs to supervisors and employee trainers that fosters and develops leadership characteristics as well as expectations.

Objective #3 LMDC shall recruit and employ a diverse workforce, as well as uphold and promote the principles and benefits of diversity.

Goal #3: LMDC is committed to effective jail-based programming that improves the quality of life within the institution, as well as maximizes opportunities for successful reintegration into our community upon release.

Measurements:

Objective #1 LMDC will expand the level of service provided within the "Pathways Re-Entry Program."

Objective #2 LMDC shall develop and implement an internal substance-abuse treatment program to address the needs of all offenders.

Objective #3 LMDC shall work to expand collaborative partnerships with community agencies and volunteers.

METRO CORRECTIONS

Goals & Indicators (continued)

Goal #4: LMDC is committed to proactively addressing the dilemma of an expanding inmate population, while recognizing the direct financial impact upon the community.

Measurements:

Objective #1 LMDC shall engage the Judiciary and community representatives in a collaborative effort to address “jail overcrowding.”

Objective #2 LMDC shall, if possible, establish the position of “Jail Population Manager” to monitor and effectively manage the population, including placement in alternative sentencing programs.

Objective #3 LMDC shall investigate and advocate the construction of a “new detention center” of modern design and purpose.

Goal #5: LMDC is committed to “Cost Systems Integration/Automation” that will help law enforcement and courts to reduce errors, expedite processing, and increase staff efficiencies.

Measurements:

Objective #1 LMDC shall engage the local and state criminal justice community in an assessment and evaluation of systems interface needs with respect to business rules, technology and costs.

Objective #2 LMDC shall review applications of criminal justice systems integration practices throughout the United States.

Objective #3 LMDC, in partnership with its criminal justice partners, shall develop a systems integration plan, cost benefit analysis, and phased implementation strategy.

Goal #6: LMDC is committed to the assimilation of the key “Metro Corrections Vision 20/20” stakeholder recommendations.

Measurements:

Objective #1 LMDC shall work to expand utilization and funding for treatment for therapeutic court programs and the “Pretrial Conditional Release Program.”

Objective #2 LMDC will continue discussions with Kentucky Department of Corrections regarding the 45-day limit for the removal of “State Inmates” and the requirement to hold probation/parole violators.

Objective #3 LMDC will work to streamline and improve processes using technology through an external management audit.

Metro Corrections

Budget Summary

	Prior Year Actual 2007-2008	Original Budget 2008-2009	Revised Budget 2008-2009	Mayor's Recommended 2009-2010	Council Approved 2009-2010
General Fund Appropriation	45,418,200	47,270,300	47,335,200	47,555,200	47,555,200
Agency Receipts	2,727,200	2,814,500	2,814,500	2,825,600	2,825,600
Federal Grants	142,800	150,000	150,000	132,800	132,800
State Grants	254,400	200,700	200,700	182,200	182,200
Total Revenue:	48,542,600	50,435,500	50,500,400	50,695,800	50,695,800
Personal Services	34,558,400	35,831,400	34,979,800	36,456,100	36,456,100
Contractual Services	10,318,900	10,920,800	10,941,100	10,744,000	10,744,000
Supplies	2,009,800	2,288,700	2,193,000	2,038,300	2,038,300
Equipment/Capital Outlay	245,000	41,700	22,500	14,400	14,400
Interdepartment Charges	1,337,400	1,352,900	1,352,900	1,443,000	1,443,000
Restricted & Other Proj Exp	0	0	1,011,100	0	0
Total Expenditure:	48,469,500	50,435,500	50,500,400	50,695,800	50,695,800
Expenditures By Activity					
Administration Division	2,768,100	2,903,100	2,903,100	2,866,500	2,866,500
Jail Complex Division	39,668,200	41,028,100	41,093,000	41,374,100	41,374,100
Community Corrections Center	6,033,200	6,504,300	6,504,300	6,455,200	6,455,200
Total Expenditure:	48,469,500	50,435,500	50,500,400	50,695,800	50,695,800

Metro Corrections	Position Detail	
	Mayor's Recommended FY2009-2010	Council Approved FY2009-2010
Position Allocation (in Full-time Equivalent)		
Sworn	478	478
Full-time	136	136
Part-time	0	0
Seasonal/Other	0	0
Total Positions	614	614

Position Title

Account Clerk Typist	1	1
Administrative Clerk	1	1
Business Manager I	1	1
Business Manager II	1	1
Chaplain	1	1
Chief of Corrections	1	1
Clerk Typist I	1	1
Clerk Typist II	4	4
Correction Officer	387	387
Corrections Captain	6	6
Corrections Clerk	10	10
Corrections Lieutenant	20	20
Corrections Major	1	1
Corrections Sergeant	54	54
Corrections Support Coordinator	1	1
Corrections Support Technician	3	3
Corrections Supervisor I	8	8
Corrections Supervisor II	3	3
Corrections Technician	7	7
Criminal Justice Supervisor	1	1
Data Systems Analyst	2	2
Data Systems Operator	2	2
Deputy for Corrections	3	3
Executive Assistant	1	1
Fingerprint ID Supervisor I	1	1
Fingerprint ID Tech II	3	3
Fingerprint ID Technician	8	8
Information Systems Analyst	1	1
Information Systems Supervisor	1	1
Inmate Grievance Counselor	2	2
Inventory Control Specialist	2	2
Management Assistant	4	4
Payroll Specialist	1	1
Personnel Specialist	1	1
Personnel Supervisor	1	1
Prisoner Class Interviewer	33	33

Metro Corrections	Position Detail	
	Mayor's Recommended FY2009-2010	Council Approved FY2009-2010
Public Information Specialist	1	1
Research Assistant	1	1
Secretary	1	1
Senior Corrections Technician	30	30
Senior Social Worker	1	1
Social Service Program Coordinator	1	1
Substance Abuse Program Coordinator	1	1