

July 9, 2007

2007 Louisville, MSA 8-Hr Ozone Monitoring Report

(Data are not quality assured)

Table 1: 2007 8-Hr Ozone Monitoring Summary Report

➤ 8-hour exceedances - 8 exceedances

8-Hour FCST AQI /Max. ppb	# 8-Hour Exceedances	# of Day with Exceedances	Date	Charlestown (CH) Clark Co. IN	New Albany (NA) Floyd Co. IN	Bates (BA) Jefferson Co. KY	Watson (WS) Jefferson Co. KY	WLKY-TV (WK) Jefferson Co. KY	Buckner (BK) Oldham Co. KY	Shepherdsville (SH) Bullitt Co. KY	# AQAs
	1	1	5/21/2007	90	76	<u>78</u>	76	78	83	77	
111 / 89	1	1	5/22/2007	85	76	76	<u>79</u>	<u>77</u>	77	<u>78</u>	1
111 / 89			5/23/2007	78	66	70	65	66	73	69	2
105 / 86			5/24/2007	73	60	70	65	63	73	69	3
106 / 87			5/30/2007	68	59	59	62	63	67	59	4
			6/11/2007	84	<u>77</u>	71	82	73	81	72	
	2	1	6/12/2007	87	84	77	85	78	84	76	
103 / 85			6/13/2007	<u>84</u>	78	76	82	75	<u>82</u>	76	5
103 / 73			6/14/2007	69	63	57	73	61	67	55	6
			6/16/07	75	70	77	77	71	80	84	
127/88	2	1	6/17/2007	82	79	85	75	79	88	78	7
105/72			6/18/2007	70	58	64	57	59	72	58	8
			6/21/07	84	68	82	74	71	72	82	
111/71			7/7/07	*	60	69	71	66	64	64	9
114/72	1	1	7/8/07	*	62	86	72	69	72	64	10
104/78			7/9/07	*	66	69	61	62	78	62	11
Total- 4 days / 6 Exceed- ances	7	5		3	0	2	1	0	1	0	

Notes: An 8-hour average of 85 ppb or greater exceeds the new ozone standard. AQA: Air Quality Alert. FCST – Forecast. Bold –greater than 84 ppb. Underline-4th max *Data isn't available.

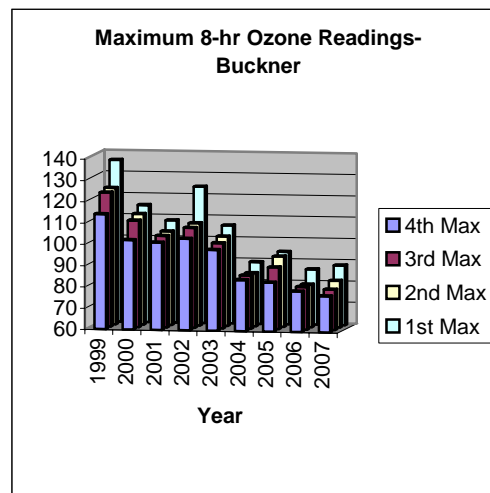
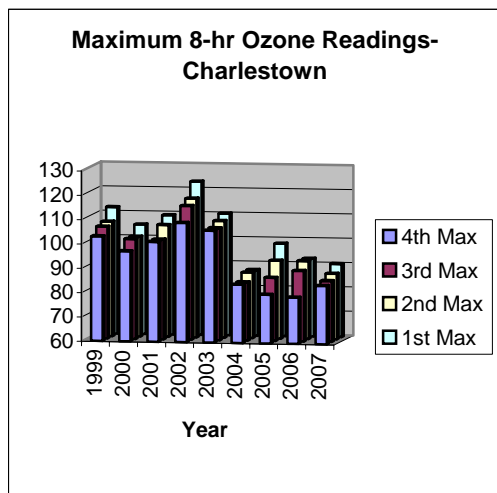


Table 2: Louisville 1998 – 2007 8-Hr Exceedance Summary

Year	Charlestown	New Albany	Bates	Watson	WLKY-TV	Buckner	Shep.	Louisville MSA Total		Jefferson County Total	
								Exceedances	Days	Exceedances	Days
1998	22	14	10	11	7	12	12	88	30	28	15
1999	11	10	16	13	4	34	11	99	44	33	22
2000	4	0	5	1	3	4	2	19	10	9	6
2001	4	0	2	1	1	4	2	14	10	4	3
2002	17	13	4	15	7	12	10	78	26	26	19
2003	4	4	1	0	0	2	0	11	7	1	1
2004	0	0	1	0	0	0	1	2	2	1	1
2005	3	2	0	4	1	4	0	14	8	5	4
2006	3	1	0	1	0	3	0	8	6	1	1
2007	3	0	2	1	0	1	0	7	5	3	3

8-hr Ozone Exceedances

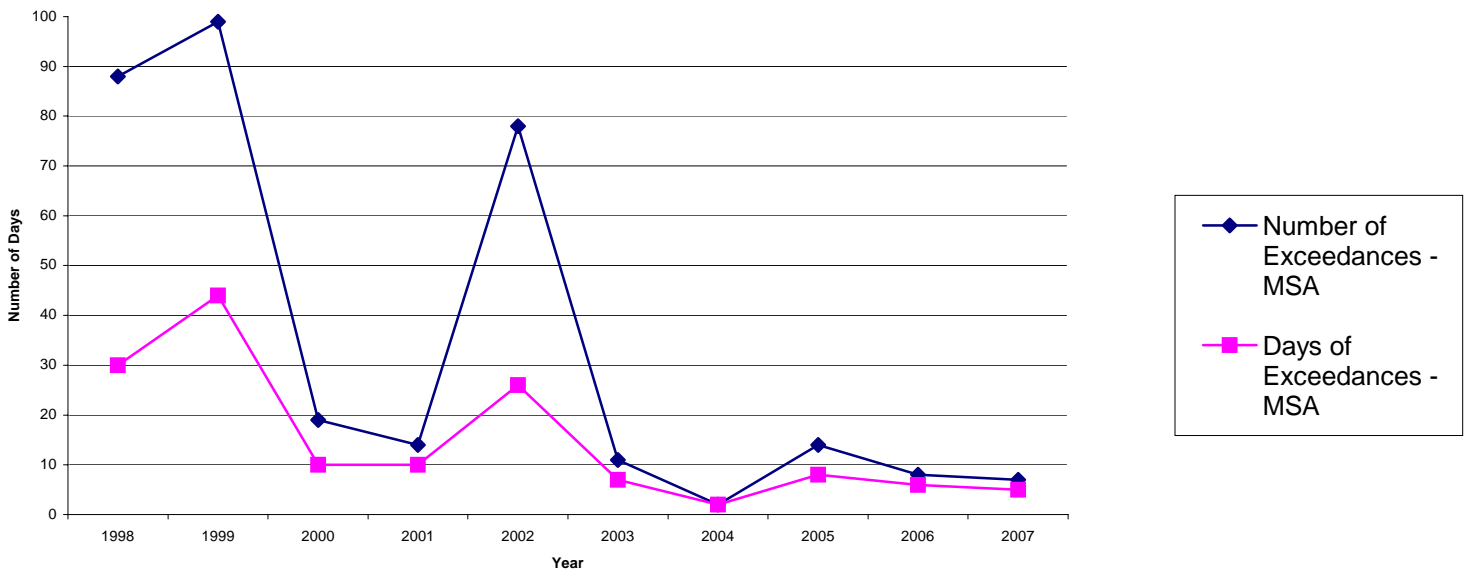


Table 3: 8-Hr Ozone 4th Maximum

Year	Louisville, MSA	Charles-Town (CH)	New Albany (NA)	Bates (BA)	Watson (WS)	WLKY-TV (WK)	Buckner (BK)	Shepherds-ville (SH)
2007	84	84	77	78	79	77	82	78
2006	83	79	76	74	77	67	83	71
2005	89	80	80	79	85	74	89	80
2004	76	74	71	70	70	68	76	68
2003	90	90	86	72	75	73	82	72
2002	100	100	97	85	96	88	91	91
2001	86	86	76	81	81	77	86	82
2000	90	85	77	90	76	84	85	82
1999	103	89	94	97	100	86	103	93

8-Hr Ozone Annual 4th Maximum Reading for Metro Louisville

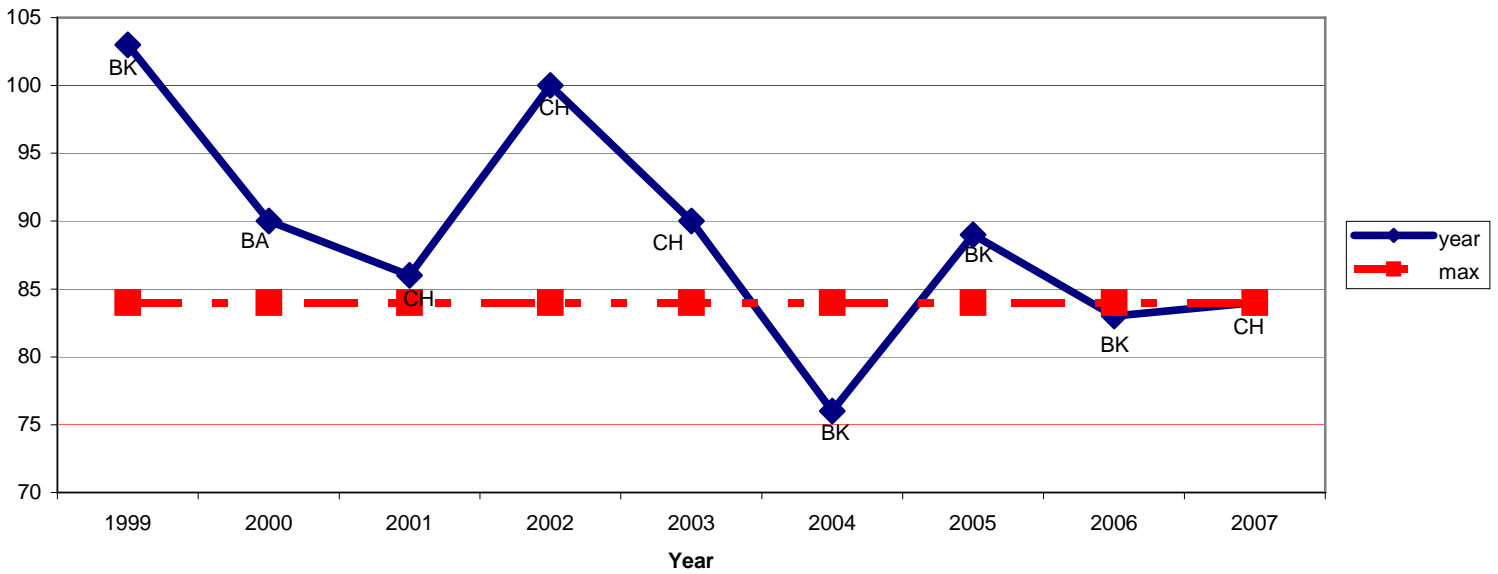


Table 4: 8-Hour Ozone Design Value Summary

Year	Louisville, MSA	Charlestown	New Albany	Bates	Watson	WLKY-TV	Buckner	Shepherdsville
05-07 Avg.	84 BK	81	77	77	80	72	84	76
04-06 Avg.	82 BK	77	75	72	77	69	82	73
03-05 Avg.	82 BK	81	79	73	76	71	82	73
02-04 Avg.	88 CH	88	84	74	80	76	82	77
01-03 Avg.	92 CH	92	86	77	84	79	86	81
00-02 Avg.	90 CH	90	83	85	84	83	87	85
99-01 Avg.	91 BK	86	82	89	85	82	91	85

Bold –Design Value Sites for respective periods.

8-Hr NAAQS: Attainment of the 8-Hr Ozone National Ambient Air Quality Standard (NAAQS) at an individual monitor is achieved when the three-year average of the annual fourth-highest daily maximum (4th maximum) 8-hr average ozone concentration is less than or equal to 84 ppb. This three-year average is the design value for that monitor.

