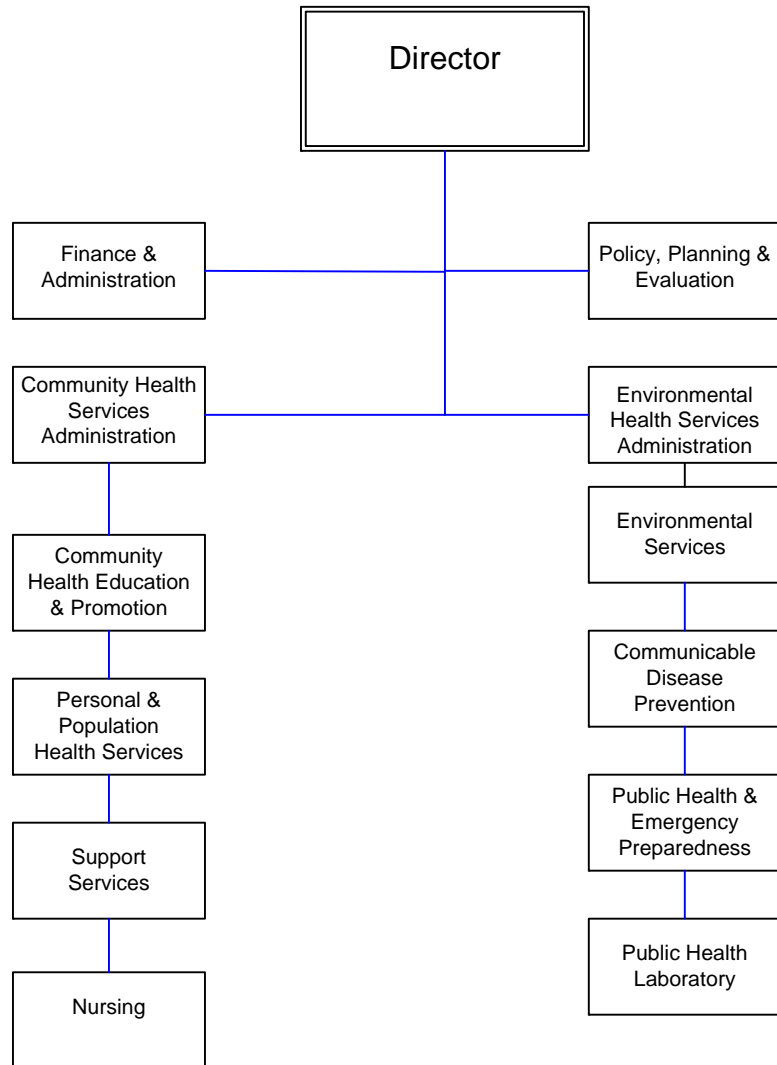




Public Health & Wellness



PUBLIC HEALTH & WELLNESS

Mission

To protect, advance, and improve the health, environment, and well-being of Louisville Metro residents through assessments, capacity building, empowerment, policy development, and assurance.

Programs and Services

Finance & Administration: To provide administrative and financial leadership and support services to the department.

Policy, Planning & Evaluation: To protect and promote the public health by compiling an annual Health Status Assessment Report of the community; coordinating the Mobility for Action through Planning and Partnership (MAPP) community strategic planning process; supporting surveillance and research projects; increasing the capacity of the health department for policy development and informatics; and supporting health department programs in monitoring performance measures and implementing best practices.

Personal & Population Health Administration: To provide leadership and administrative support to its direct and related divisions and staff.

Community Health Education & Promotion: To work collaboratively with community members and partner organizations to inform, educate, and empower people on health matters; provide leadership in collaborative partnerships to find creative solutions to health problems; support evidence-based and promising practices to improve individual and community health; and utilize community events, training and social marketing to increase public awareness of healthy behaviors that result in the prevention of chronic disease.

The Center for Health Equity: To work to define the local causes of health inequities and identify potential local solutions; increase community awareness of inequities; form new partnerships and coalitions with organizations not traditionally associated with public/community health efforts; and investigate and apply best practices that have shown positive results in eliminating health inequities.

PUBLIC HEALTH & WELLNESS

Programs and Services (continued)

Personal & Population Health Services: To improve the quality of life of Louisville Metro residents by ensuring access to services by providing or contracting for preventive health services including childhood immunizations and flu shots, women’s health services, dental, methadone treatment services, early childhood services and screenings, case management services, and a variety of nutrition-related services including the Special Supplemental Nutrition Program for Women, Infants & Children (WIC) for individuals; by operating health centers throughout the region for access to these preventive services; and by offering reduced-fee or subsidized services for citizens in need.

Support Services: To provide information technology support and assistance.

Environmental Services: To protect the environment of the community by providing administrative support to the Environmental Health Services Division by ensuring the safety of the public food supply; by ensuring adequate sanitation standards; by reducing and eliminating disease vector and nuisance mosquito population; by ensuring the adequate and appropriate community response to hazardous materials; and by mitigating and preventing children’s exposure to lead poisoning.

Communicable Disease Prevention: To protect the health of Louisville Metro citizens by monitoring communicable diseases through education, surveillance, investigation, epidemiology, and by assuring that vaccination and treatment are provided where appropriate.

Public Health & Emergency Preparedness: To ensure rapid, strategic and coordinated response to any public health emergency by preparing health professionals and others in the detection, containment, treatment of affected persons, and mitigation or elimination of the threat to public health.

Public Health Laboratory: To support overall operations by serving as a testing laboratory; by managing and maintaining efficient, quality laboratory services; and by providing emergency preparedness laboratory functions.

PUBLIC HEALTH & WELLNESS

Goals & Indicators

- Be a leader in public health practice.
- Ensure health equity.
- Improve health outcomes with a focus on community-based health promotion and disease prevention.
- Ensure growth and sustainability of preventive health care and environmental services to the community.
- Engage in collaborative relationships to combine resources toward common goals.
- Be prepared to respond to emergencies and disasters.
- Improve customer service quality.
- Reduce exposure to environmental health and safety hazards.

Public Health & Wellness

Budget Summary

	Prior Year Actual 2007-2008	Original Budget 2008-2009	Revised Budget 2008-2009	Mayor's Recommended 2009-2010	Council Approved 2009-2010
General Fund Appropriation	10,902,000	11,458,500	11,458,500	10,299,100	10,319,100
Agency Receipts	2,563,500	2,257,400	2,717,100	2,588,800	2,588,800
Federal Grants	9,779,300	9,582,700	10,054,400	10,124,600	10,124,600
State Grants	3,150,500	3,231,500	3,234,200	2,941,900	2,941,900
Total Revenue:	26,395,300	26,530,100	27,464,200	25,954,400	25,974,400
Personal Services	15,972,800	16,214,700	15,165,700	14,652,200	14,652,200
Contractual Services	7,470,400	7,487,500	7,687,700	8,562,700	8,562,700
Supplies	1,532,300	1,512,800	1,480,700	1,487,300	1,487,300
Equipment/Capital Outlay	6,000	1,100	197,700	179,800	179,800
Interdepartment Charges	1,048,500	979,900	1,866,800	1,072,400	1,072,400
Restricted & Other Proj Exp	0	334,100	1,065,600	0	20,000
Total Expenditure:	26,030,000	26,530,100	27,464,200	25,954,400	25,974,400
Expenditures By Activity					
Administration & Support Division	942,900	785,000	723,200	2,021,500	2,021,500
Pop. & Personal Health Services	13,089,900	12,745,600	13,679,000	11,843,400	11,863,400
Env. Health Services Division	11,997,200	12,999,500	13,062,000	12,089,500	12,089,500
Total Expenditure:	26,030,000	26,530,100	27,464,200	25,954,400	25,974,400

Public Health & Wellness	Position Detail	
	Mayor's Recommended FY2009-2010	Council Approved FY2009-2010
Position Allocation (in Full-time Equivalents)		
Full-time	305	305
Part-time	8	8
Seasonal/Other	26	26
Total Positions	339	339

Position Title

Administrative Assistant	4	4
Administrative Coordinator	3	3
Advanced Registered Nurse Practitioner	1	1
Assistant Director	3	3
Business Accountant I	2	2
Business Manager I	2	2
Business Manager II	1	1
Business Specialist	1	1
Business Technician	1	1
Clerical Supervisor	1	1
Clerk Typist II	5	5
Community Health Nurse Specialist	8	8
Community Health Social Service Assistant I	2	2
Community Health Social Service Assistant II	11	11
Community Health Administrator	6	6
Community Health Manager	5	5
Community Health Nurse Supervisor	7	7
Community Health Specialist	6	6
Community Health Supervisor	8	8
Community Health Service Clerk	39	39
Community Health Medical Assistant	19	19
Community Health Nurse Specialist	41	41
Community Health Social Worker	4	4
Community Outreach Coordinator	1	1
Data Systems Analyst	1	1
Dentist	4	4
Environmental Engineer Coordinator	1	1
Environmental Health Administrator	1	1
Environmental Health Manager	2	2
Environmental Health Specialist	32	32
Environmental Health Supervisor	4	4
Epidemiologist	5	5
Executive Assistant	1	1
Expanded Functions Dental Assistant	3	3
Grants Contract Coordinator	1	1
Health Education Specialist II	13	13
Information Systems Specialist	1	1
Inventory Control Specialist	1	1
Laboratory Assistant	1	1
Laboratory Technician	2	2

Public Health & Wellness	Position Detail	
	Mayor's Recommended FY2009-2010	Council Approved FY2009-2010
Laboratory Technician & General Supervisor	1	1
Laboratory Technologist	5	5
Licensed Practical Nurse	3	3
Local Area Network Analyst	1	1
Management Assistant	16	16
Mosquito Control	6	6
Nutrition Manager	1	1
Nutrition Services Specialist	18	18
Nutrition Supervisor	1	1
Nutrition Services Educator	3	3
Nutrition Services Specialist	1	1
Office Worker	1	1
Payroll Specialist	1	1
Plan Reviewer	1	1
Public Information Specialist	1	1
Public Information Supervisor	1	1
Quality Improvement Supervisor	1	1
Radiologic Technician	1	1
Receptionist	1	1
Secretary	6	6
Secretary/Stenographer	1	1
Senior Substance Abuse Counselor	4	4
Social Service Technician	1	1
Substance Abuse Supervisor	2	2
Swimming Pool Programmer	3	3
Technology Cabinet Administrator	1	1
Training Coordinator	1	1
Translator	1	1
Vital Statistics Specialist	1	1