

# October 7, 2005

## Louisville, MSA 8-Hr & 1-Hr Ozone Monitoring Report

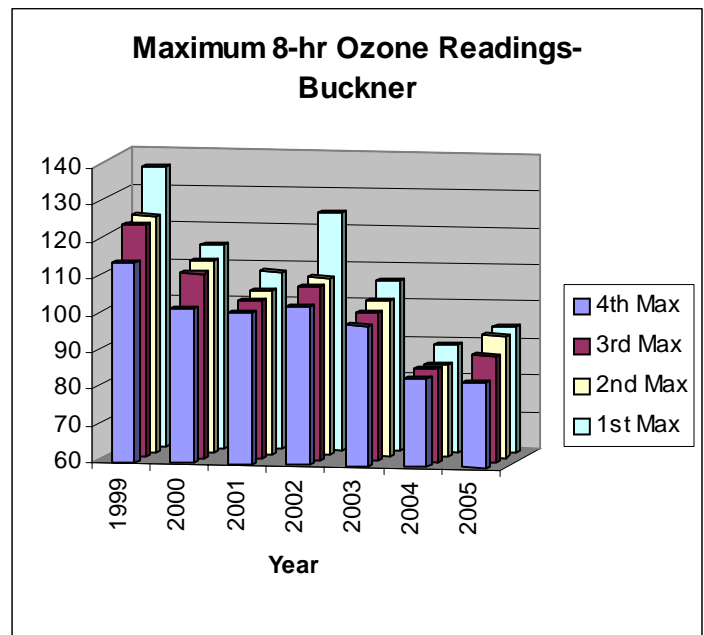
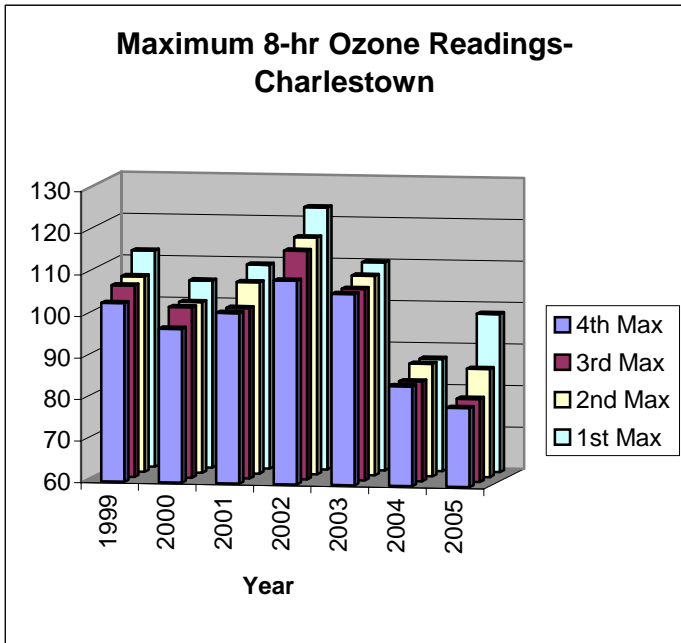
*(Data are not quality assured)*

**Table 1: 2005 8-Hr and 1-Hr Ozone Monitoring Summary Report**

- 8-hour exceedances - 14 exceedances on 8 days (the highest reading is 98 ppb on 6/24/2005)
- 1-hour exceedances - none (the highest reading is 117 ppb on 6/24/2005)

8-Hour FCST /Max. ppb	8-Hour Exceedance #	# of Day with Exceedance	Date	Charlestown (CH) Clark County, IN		New Albany (NA) Floyd County, IN		Bates (BA) Jefferson County, KY		Watson (WS) Jefferson County, KY		WLKY-TV (WK) Jefferson County, KY		Buckner (BK) Oldham County, KY		Shepherdsville (SH) Bullitt County, KY		# AQA
				8-hr	1-hr	8-hr	1-hr	8-hr	1-hr	8-hr	1-hr	8-hr	1-hr	8-hr	1-hr	8-hr	1-hr	
92/86	1	1	6/23/05	77	80	78	91	<b>83</b>	91	<b>86</b>	97	<b>76</b>	85	75	80	80	86	1
103/98	3	2	6/24/05	<b>98</b>	117	<b>86</b>	96	<b>79</b>	88	80	94	<b>84</b>	101	<b>89</b>	98	<u>74</u>	83	2
104/92	4	3	6/25/05	<b>92</b>	105	<b>92</b>	104	69	73	<b>86</b>	94	<b>88</b>	96	82	86	75	81	3
97/81			6/26/05	76	81	76	81	72	79	77	84	<u>74</u>	79	81	87	68	77	4
98/83			7/09/05	72	75	71	72	75	78	75	62	69	72	81	87	83	87	5
94/83			7/10/05	<u>80</u>	88	<b>83</b>	78	73	76	82	86	74	80	82	86	73	76	6
81/91	1	4	7/23/05	65	42	73	85	63	69	<b>91</b>	116	61	67	73	75	66	76	
93/80			7/24/05	72	79	60	65	59	64	56	65	58	70	80	96	53	55	7
84/94	1	5	7/25/05	71	78	63	68	60	75	58	65	57	65	<b>94</b>	107	52	61	
79/85	1	6	7/31/05	75	82	73	77	65	69	<b>85</b>	97	67	69	82	91	71	73	
89/78			8/01/05	73	80	68	75	61	67	74	87	62	72	78	68	57	65	8
102/81			8/02/05	76	91	<u>81</u>	103	60	79	53	63	59	68	77	89	63	73	9
97/94	1	7	8/03/05	76	92	65	77	73	83	62	67	61	79	<b>94</b>	113	61	66	10
80/93	2	8	8/11/05	<b>86</b>	95	80	93	<u>75</u>	90	70	81	73	80	<b>93</b>	111	70	80	
4 <sup>th</sup> Max.				80		81		75		<b>85</b>		74		<b>89</b>		74		
Total- 8 days / 14 Exceedances	14	8	0	3	0	2	0	0	0	4	0	1	0	4	0	0	0	10

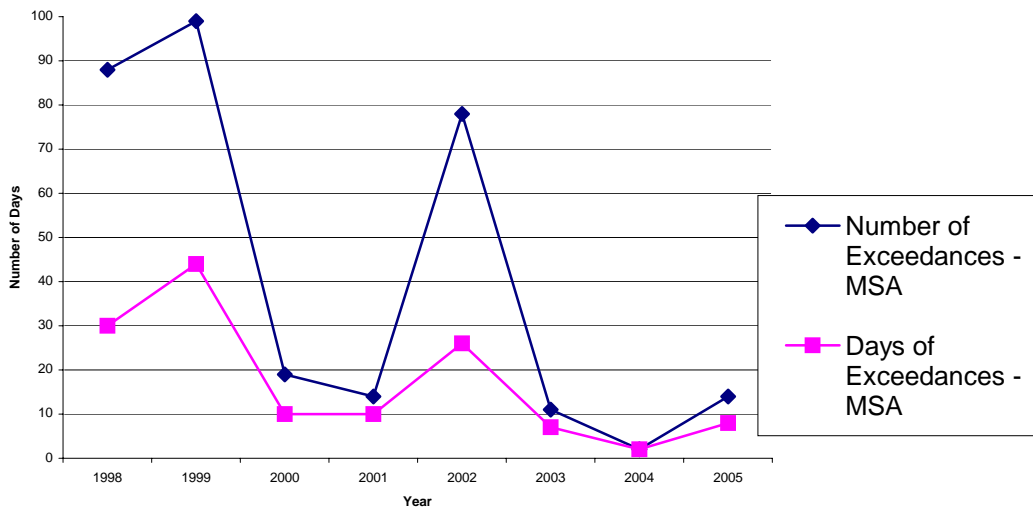
Notes: A 1-hour average of 125 ppb or greater exceeds the old ozone standard; an 8-hour average of 85 ppb or greater exceeds the new ozone standard. AQA: Air Quality Alert. FCST – Forecast. Bold –greater than 84 ppb. Underline – 4<sup>th</sup> Max.



**Table 2: Louisville 1998 – 2005 8-Hr Exceedance Summary**

Year	Charlestown	New Albany	Bates	Watson	WLKY-TV	Buckner	Shep.	Louisville MSA Total		Jefferson County Total	
								Exceedances	Days	Exceedances	Days
1998	22	14	10	11	7	12	12	88	30	28	15
1999	11	10	16	13	4	34	11	99	44	33	22
2000	4	0	5	1	3	4	2	19	10	9	6
2001	4	0	2	1	1	4	2	14	10	4	3
2002	17	13	4	15	7	12	10	78	26	26	19
2003	4	4	1	0	0	2	0	11	7	1	1
2004	0	0	1	0	0	0	1	2	2	1	1
2005*	3	2	0	4	1	4	0	14	8	5	4

**8-hr Ozone Exceedances**

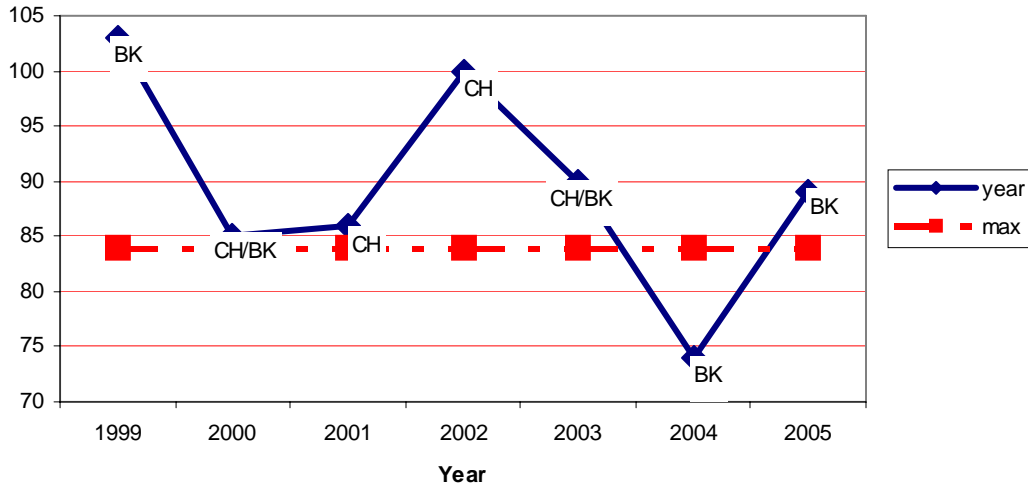


**Table 3: 8-Hr Ozone 4<sup>th</sup> Maximum**

Year	Louisville, MSA	Charlestown	New Albany	Bates	Watson	WLKY-TV	Buckner	Shepherdsville
2005*	<b>89</b>	80	81	75	85	74	<b>89</b>	74
2004	<b>74</b>	<b>74</b>	71	70	70	67	<b>74</b>	68
2003	<b>90</b>	<b>90</b>	86	67	75	73	82	72
2002	<b>100</b>	<b>100</b>	97	85	96	88	91	91
2001	<b>86</b>	<b>86</b>	76	81	81	77	<b>86</b>	82
2000	<b>90</b>	85	77	<b>90</b>	76	84	85	82
1999	<b>103</b>	89	94	97	100	86	<b>103</b>	93

\*Year-to-date data.

**8-Hr Ozone Maximum Reading for Buckner and Charlestown**



**Table 4: 8-Hour Ozone Design Value Summary**

Year	Louisville, MSA	Charlestown	New Albany	Bates	Watson	WLKY-TV	Buckner	Shepherdsville
03-05 Avg.*	<b>81 CH/BK</b>	81	79	70	76	71	81	71
02-04 Avg.	<b>88 CH</b>	88	84	74	80	76	82	77
01-03 Avg.	<b>92 CH</b>	92	86	77	84	79	86	81
00-02 Avg.	<b>90 CH</b>	90	83	85	84	83	87	85
99-01 Avg.	<b>91 BK</b>	86	82	89	85	82	91	85

\*Year-to-date data.

Bold –Design Value Sites for respective periods.

**8-Hr NAAQS:** Attainment of the 8-Hr Ozone National Ambient Air Quality Standard (NAAQS) at an individual monitor is achieved when the three-year average of the annual fourth-highest daily maximum (4<sup>th</sup> maximum) 8-hr average ozone concentration is less than or equal to 84 ppb. This three-year average is the design value for that monitor.

