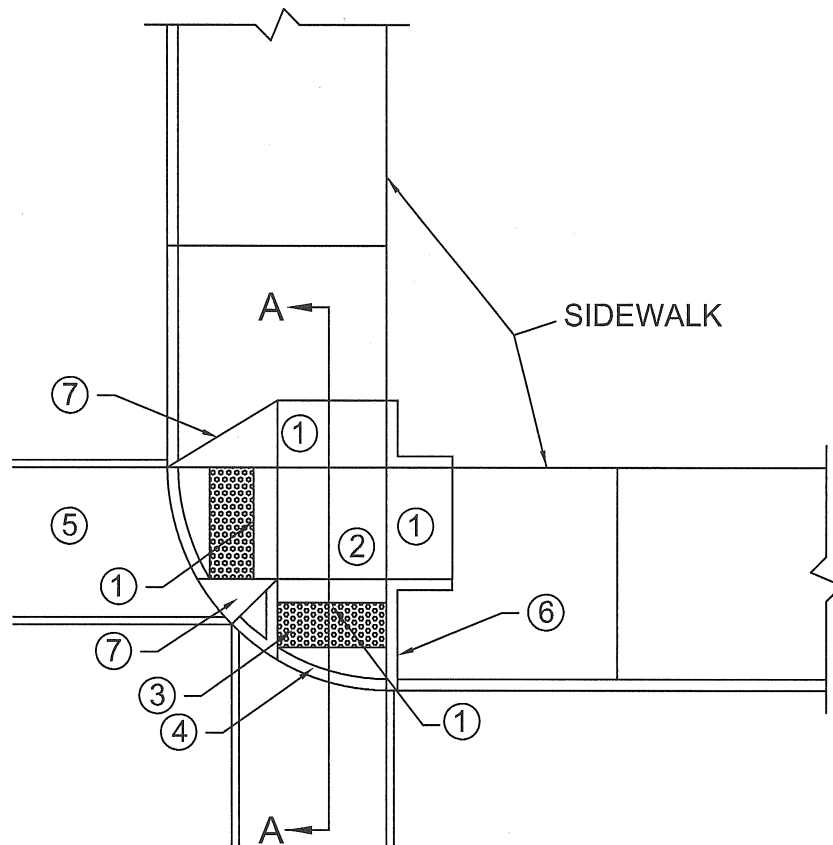


## SECTION A-A



### GENERAL NOTES

SIDEWALKS, SHARED-USE PATHS, AND RAMPS SHALL BE CONSTRUCTED OF KYTC CLASS A (3,500 PSI COMPRESSIVE STRENGTH IN 28 DAYS) CONCRETE HAVING A SLUMP BETWEEN 2 AND 4-INCHES. MINIMUM UNIFORM THICKNESS OF 4 INCHES. MINIMUM 4 INCHES THICKNESS KYTC No. 57 STONE PLACED OVER COMPACTED SUBGRADE. MAY BE REPLACED WITH 4 INCHES COMPACTED DGA WITH METRO APPROVAL.

- ① RAMP MIN. WIDTH 5'-0", RAMP GRADE SHALL NOT EXCEED 1:12, CROSS SLOPE SHALL NOT EXCEED 2%.
- ② 5' SQUARE LANDING MINIMUM. SLOPE TO DRAIN TO STREET. CROSS SLOPE SHALL NOT EXCEED 2% IN ALL DIRECTIONS.
- ③ TRUNCATED DOMES, SEE KYTC RGX-040
- ④ ½" EXPANSION JOINT AT BACK OF CURB LINE AND AT SIDEWALK LINE.
- ⑤ MIN. CROSSWALK WIDTH SHALL BE 6' AT UNSIGNALIZED INTERSECTIONS AND 8' AT SIGNALIZED INTERSECTIONS.
- ⑥ CURB RAMPS WITH RETURNED CURBS MAY BE USED WHERE PEDESTRIANS WOULD NOT NORMALLY WALK ACROSS THE RAMP DUE TO UTILITIES OR FURNISHINGS (LIGHT POLES, TRASH RECEPTACLES, ETC.).
- ⑦ CURB RAMPS LOCATED WHERE PEDESTRIANS MUST WALK ACROSS THE RAMP SHALL HAVE FLARED SIDES WITH A MAXIMUM SLOPE OF 1:10.

LOUISVILLE METRO  
PUBLIC WORKS

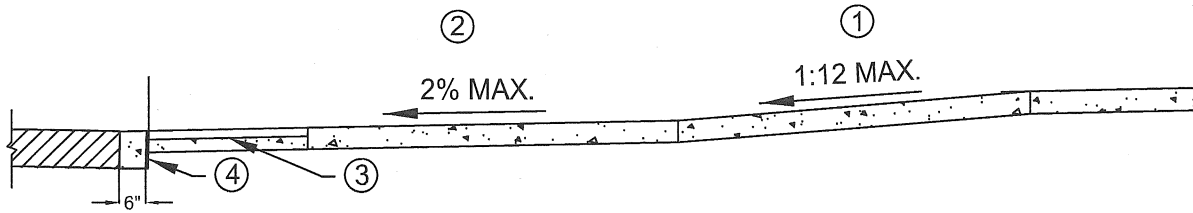
ACCESSIBLE  
CURB  
RAMPS

STANDARD DRAWING NO. 202A

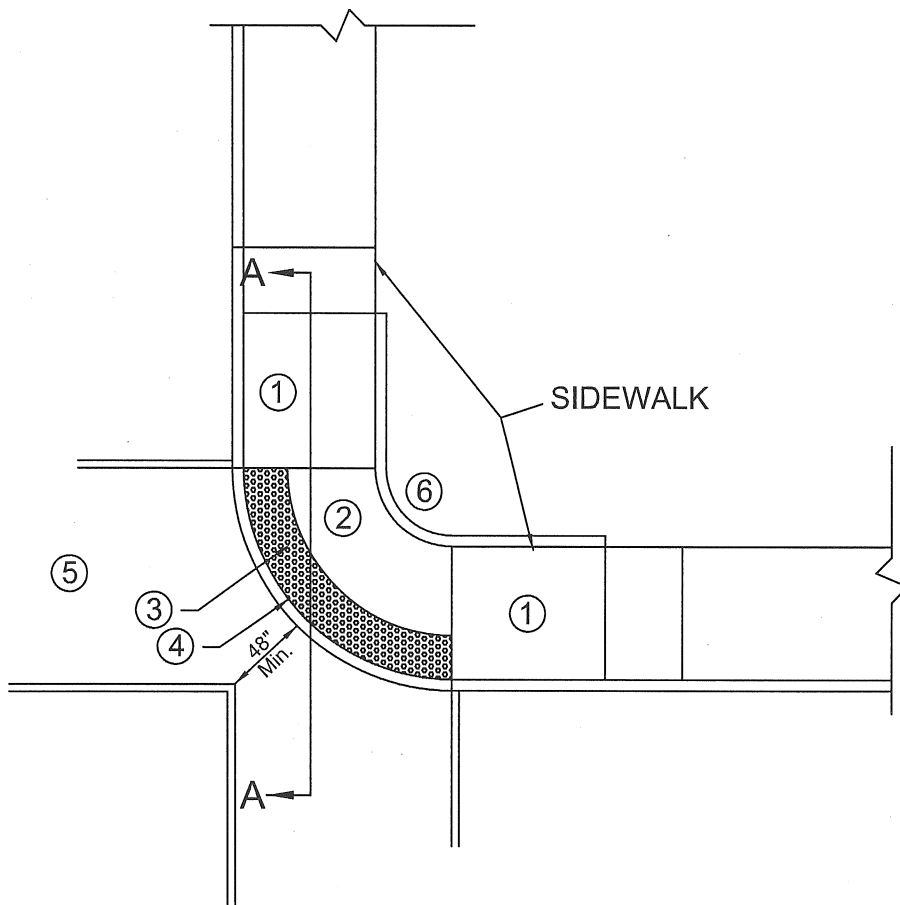
APPROVED BY

DATE

*[Signature]* 9/27/11



SECTION A-A



GENERAL NOTES  
 SIDEWALKS, SHARED-USE PATHS, AND RAMPS SHALL BE CONSTRUCTED OF KYTC CLASS A (3,500 PSI COMPRESSIVE STRENGTH IN 28 DAYS) CONCRETE HAVING A SLUMP BETWEEN 2 AND 4 INCHES. MINIMUM UNIFORM THICKNESS OF 4 INCHES. MINIMUM 4 INCHES THICKNESS KYTC No. 57 STONE PLACED OVER COMPACTED SUBGRADE. MAY BE REPLACED WITH 4 INCHES COMPACTED DGA WITH METRO APPROVAL.

- ① RAMP MIN. WIDTH 5'-0", RAMP GRADE SHALL NOT EXCEED 1:12, CROSS SLOPE SHALL NOT EXCEED 2%.
- ② LANDING, SLOPE TOWARD STREET AT 2%. CROSS SLOPE SHALL NOT EXCEED 2%.
- ③ TRUNCATED DOMES, SEE KYTC RGX-040
- ④ ½" EXPANSION JOINT AT BACK OF CURB LINE AND AT SIDEWALK LINE.
- ⑤ MIN. CROSSWALK WIDTH SHALL BE 6' AT UNSIGNALIZED INTERSECTIONS AND 8' AT SIGNALIZED INTERSECTIONS.
- ⑥ OPTIONAL CURB AT BACK OF SIDEWALK FOR SOIL RETAINAGE.

LOUISVILLE METRO  
 PUBLIC WORKS

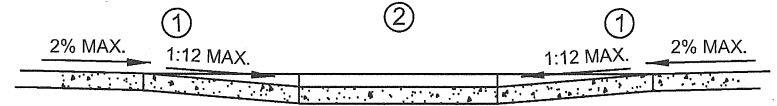
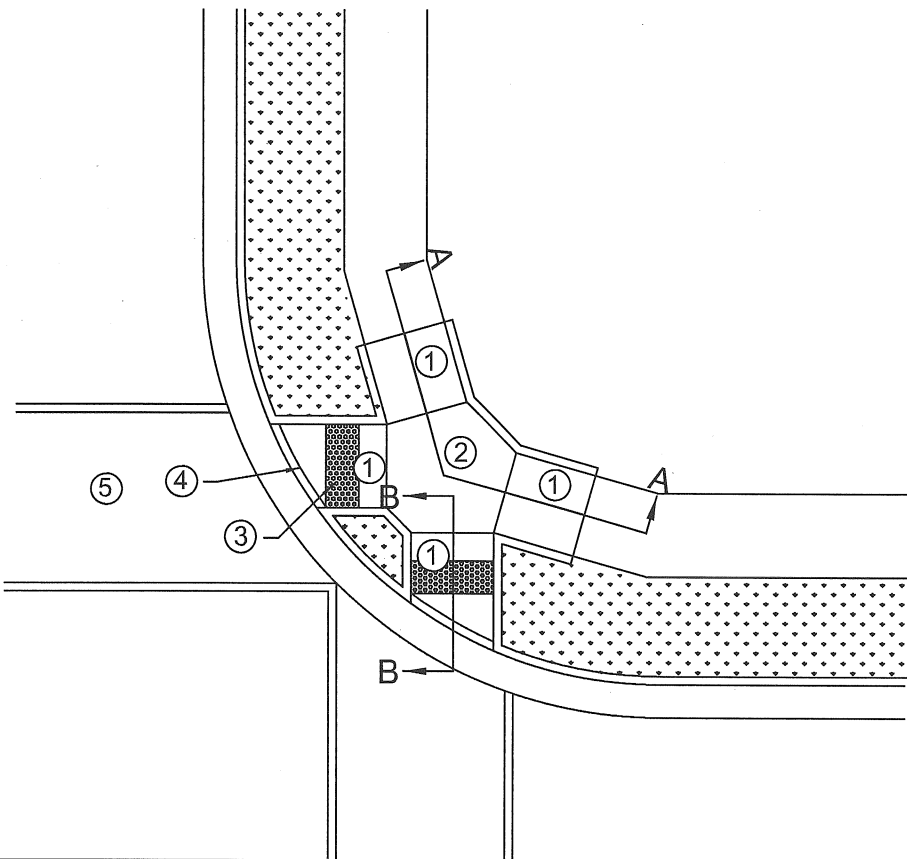
ACCESSIBLE  
 CURB  
 RAMPS

STANDARD DRAWING NO. 202B

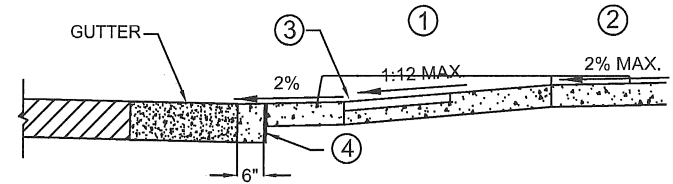
APPROVED BY

DATE

*[Signature]* 9/27/11



SECTION A-A



SECTION B-B

**GENERAL NOTES**

SIDEWALKS, SHARED-USE PATHS, AND RAMPS SHALL BE CONSTRUCTED OF KYTC CLASS A (3,500 PSI COMPRESSIVE STRENGTH IN 28 DAYS) CONCRETE HAVING A SLUMP BETWEEN 2 AND 4 INCHES. MINIMUM UNIFORM THICKNESS OF 4 INCHES. MINIMUM 4 INCHES THICKNESS KYTC No. 57 STONE PLACED OVER COMPACTED SUBGRADE. MAY BE REPLACED WITH 4 INCHES COMPACTED DGA WITH METRO APPROVAL.

- ① RAMP MIN. WIDTH 5'-0", RAMP GRADE SHALL NOT EXCEED 1:12, CROSS SLOPE SHALL NOT EXCEED 2%.
- ② 5' SQUARE LANDING MINIMUM. SLOPE TO DRAIN TO STREET. CROSS SLOPE SHALL NOT EXCEED 2% IN ALL DIRECTIONS.
- ③ TRUNCATED DOMES, SEE KYTC RGX-040.
- ④ ½" EXPANSION JOINT AT BACK OF CURB LINE AND AT SIDEWALK LINE.
- ⑤ MIN. CROSSWALK WIDTH SHALL BE 6' AT UNSIGNALIZED INTERSECTIONS AND 8' AT SIGNALIZED INTERSECTIONS

LOUISVILLE METRO  
PUBLIC WORKS

ACCESSIBLE  
CURB  
RAMPS

STANDARD DRAWING NO. 202C

APPROVED BY *[Signature]*

9/27/11  
DATE