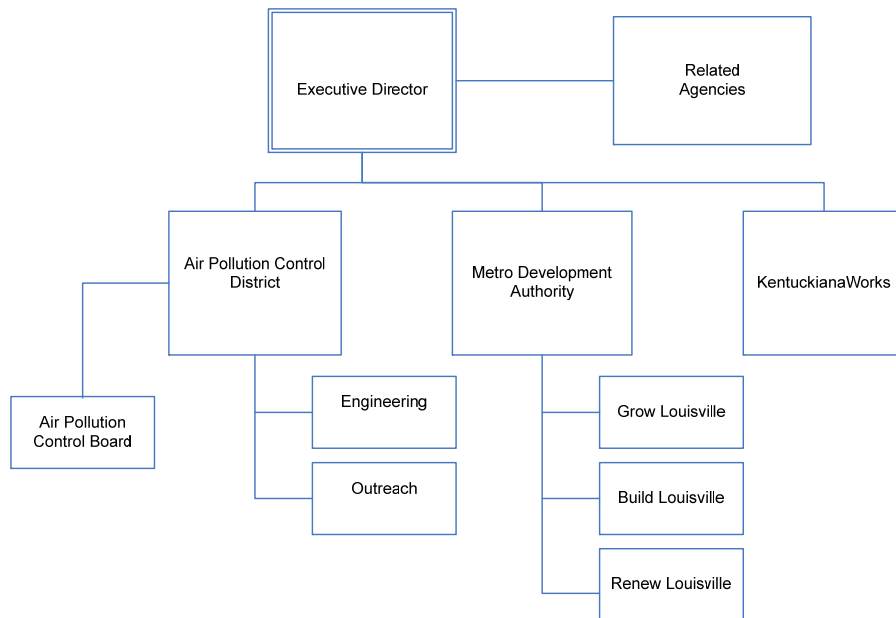




Economic Development



- Related Agencies:
- Downtown Development Corporation
 - Downtown Management District
 - Louisville Medical Center Development Corporation – Metacyte
 - Riverport Authority/Louisville Metro Properties
 - Greater Louisville Inc. (GLI)
 - Greater Louisville Sports Commission, Inc.
 - Metropolitan Scholars College
 - Kentucky World Trade Center
 - Kentuckiana Regional Planning and Development Agency
 - Jefferson County Extension Office
 - Jefferson County Soil and Water Conservation District
 - Small Business Development Center
 - Parking Authority of River City (PARC)

ECONOMIC DEVELOPMENT

Mission

The Economic Development Department provides customized solutions to businesses seeking to expand anywhere within our city. The Department uses infrastructure improvements, business start-up assistance, development plans, and acts as liaison with all regulatory agencies, to help create new industrial, office, and technology jobs; grow family incomes; and enhance the delivery of retail services throughout our community. By interacting with state and federal workforce programs, the Department provides assistance to persons seeking additional education and job (re)training and to companies who need help in recruiting, training, and maintaining a quality workforce. The Department works to protect the quality of our city's air through permitting and enforcement of federal, state, and local laws. The Department also promotes the growth and development of the Central Business District and provides on- and off-street parking to support downtown businesses, their employees and customers.

ECONOMIC DEVELOPMENT

Programs and Services

Metro Development Authority:

Grow Louisville:

- Grow jobs by addressing the needs of start-up and small businesses and assist existing businesses that wish to expand as well as companies looking to move to Louisville.
- Increase higher paying jobs by attracting headquarters to Louisville, identifying and supporting high growth existing businesses, and focusing on technology related industries, businesses, and government agencies.
- Attract and retain the bright young professionals by direct contact and by creating the amenities that will make our city a place young professionals want to live.
- Increase, through cooperative efforts with KentuckianaWorks, the number of Louisville residents with Associate, Bachelors, and advanced degrees.
- Enhance the quality of life in all neighborhoods by developing access to goods, shopping, and services within the city's commercial corridors and Central Business District (CBD).

Build Louisville:

- Provide low interest and forgivable loan products to industrial and retail businesses locating in distressed neighborhoods and the CBD.
- Utilize incentives (TIF's, IRB's, manufacturer's moratoriums, and Kentucky Economic Development Finance Authority programs) to encourage industrial, retail and commercial development in targeted areas.
- Provide advocacy services for businesses seeking building permits, licenses, and land development code approvals.
- Support effective mapping and on-line real estate databases to assist companies coming to town or already here and looking to grow.
- Recruit developers of retail, commercial, and industrial businesses to create large-scale amenities and destinations within the CBD and neighborhoods needing new job and retail opportunities.

ECONOMIC DEVELOPMENT

Programs and Services (continued)

Metro Development Authority (continued):

Renew Louisville:

- Develop favorable business environments at Louisville's industrial and office parks, the CBD, and the older industrial areas.
- Improve and update streetscape infrastructure in key business corridors, the CBD and redeveloping industrial areas.
- Reposition publicly and privately owned brownfield sites to capture new economic activity.
- Support efforts to effectively "brand" Louisville in order to enhance workforce and business attraction/retention activities.

ECONOMIC DEVELOPMENT

Programs and Services (continued)

Air Pollution Control District:

Engineering:

- **Permitting:** To assure all new industrial construction meets Louisville Metro standards by providing engineering review of plans for new sources of air pollution and issuing permits containing emission limits and operational requirements; inspecting sources of air pollution to determine compliance with permit requirements; and creating emission inventories used in developing plans to attain Environmental Protection Agency (EPA) air quality standards.
- **Compliance:** To ensure compliance with Louisville's air pollution laws by inspecting sources of air pollution, including demolition and renovation projects involving asbestos, and investigating citizen complaints of odor, dust, smoke, and other nuisances.
- **Enforcement:** To take formal enforcement actions and resolve non-compliance issues through monetary penalties and/or corrective actions.

Outreach:

- **Kentuckiana Air Education:** (KAIRE) is the Air Pollution Control District's community outreach and education program, enhancing our neighborhoods and quality of life helps to ensure environmental and economic health for residents. KAIRE's primary goal is to increase public awareness of the impact individual choices can have on local air quality.
- **Monitoring:** To ensure the highest air quality for Louisville citizens by monitoring, collecting, processing, and reporting to the public all ambient air pollution data throughout the community for EPA-regulated pollutants.
- **Environmental Outreach:** To develop a comprehensive air quality strategy and program by addressing urban sprawl; promoting cleaner fuels; encouraging the development and use of mass transit systems; encouraging energy efficiency, conservation, and use of renewable energy sources; educating the public; and promoting environmentally-friendly practices.

ECONOMIC DEVELOPMENT

Programs and Services (continued)

KentuckianaWorks:

KentuckianaWorks is not a direct service provider, but invests millions of dollars in local organizations that provide education, training and employment services to job seekers and employers. Some of these workforce initiatives include KentuckianaWorks One-Stop Career Centers. These award-winning centers provide a full array of workforce services to employers and job seekers including career development, resume assistance, human resources, training and staffing services. One of our contractors operates several Adult One-Stop Career Centers in the seven-county region, serving thousands of job seekers and hundreds of business customers each year. In addition, another contractor operates our Youth One-Stop Career Center at the Jefferson Education Center.

- **Kentuckiana College Access Center (KCAC):** The Kentuckiana College Access Center provides free educational, financial aid and career counseling to adults and youth to assist them in identifying and successfully completing their educational and career goals.
- **Project Crew:** CREW was initiated in the fall of 2003 as a partnership among Metropolitan College, Jefferson Community College, Career Resources, Inc. and KentuckianaWorks. This unique collaboration allows community college students and others to learn how potential programs of study connect with local career opportunities and what resources are available to help them stay in school and achieve their goals.
- **Youth Workforce Development Services:** KentuckianaWorks supports many organizations in the community that provide career, leadership, educational and personal development services to youth.

ECONOMIC DEVELOPMENT

Goals & Indicators

Strategically, the KentuckianaWorks Board is positioned to address three major economic and workforce investment goals:

- Raising the educational attainment levels of our citizens across the board - from GED's to Ph.D's.
- Creating a responsive workforce system that meets the needs of employers and economic development professionals.
- Aiming for and achieving quantum change, not just incremental progress, to move Greater Louisville into a new competitive position compared to our main competitors.

The Board will accomplish these goals by building business, education and community partnerships that address the life-long education, training and employment needs of our community.

Economic Development

Budget Summary

	Prior Year Actual 2006-2007	Original Budget 2007-2008	Revised Budget 2007-2008	Mayor's Recommended 2008-2009	Council Approved 2008-2009
General Fund Appropriation	6,577,600	9,133,500	9,243,200	8,462,000	8,691,800
Agency Receipts	10,744,500	18,630,400	19,062,100	13,336,300	13,235,400
Federal Grants	2,190,300	2,896,900	3,046,900	15,149,000	15,149,000
State Grants	0	151,700	126,700	0	0
Total Revenue:	19,512,400	30,812,500	31,478,900	36,947,300	37,076,200
Personal Services	8,045,900	8,944,800	8,944,800	10,111,000	9,977,300
Contractual Services	5,883,500	9,512,000	10,414,800	20,323,000	20,323,000
Supplies	79,500	148,600	148,600	244,700	244,700
Equipment/Capital Outlay	98,700	381,100	289,500	523,700	523,700
Interdepartment Charges	4,499,700	4,432,000	4,432,000	4,504,800	4,504,800
Restricted & Other Proj Exp	0	7,394,000	7,249,200	1,240,100	1,502,700
Total Expenditure:	18,607,300	30,812,500	31,478,900	36,947,300	37,076,200
Expenditures By Activity					
Economic Development	13,638,000	23,929,600	24,567,100	16,607,000	16,737,600
Air Pollution Control District	4,969,300	6,882,900	6,911,800	7,290,300	7,288,600
KentuckianaWorks	0	0	0	13,050,000	13,050,000
Total Expenditure:	18,607,300	30,812,500	31,478,900	36,947,300	37,076,200

Economic Development	Position Detail	
	Mayor's Recommended FY2008-2009	Council Approved FY2008-2009
Position Allocation (in Full-time Equivalents)		
Full-time	152	152
Permanent Part-time	1	1
Seasonal/Other	1	1
Total Positions	154	154

Position Title

Administrative Assistant	4	4
Administrative Clerk	5	5
Administrative Specialist	2	2
Administrative Supervisor II	1	1
Air Pollution Compliance Officer	6	6
Air Pollution Technician II	5	5
Assistant Director	5	5
Business Accountant I	1	1
Business Accountant II	5	5
Business Manager I	1	1
Business Manager II	1	1
Business Specialist	4	4
Community Outreach Coordinator	2	2
Director	2	2
Economic Development Coordinator	3	3
Economic Development Officer	11	11
Economic Development Supervisor	2	2
Education Manager	1	1
Education Specialist	1	1
Engineer I	12	12
Engineer Supervisor	1	1
Environmental Coordinator	11	11
Environmental Engineer Coordinator	4	4
Environmental Engineer Manager	1	1
Environmental Engineer Specialist	1	1
Environmental Engineer Supervisor	2	2
Environmental Manager	1	1
Environmental Specialist	8	8
Environmental Supervisor	3	3
Executive Administrator	7	7
Executive Assistant	2	2
Geographic Information Systems Analyst	2	2
Grants Contract Coordinator	1	1
Information Systems Analyst	3	3
Local Area Network Analyst	1	1
Management Assistant	3	3
Parking Enforcement Officer I	4	4
Parking Facilities Coordinator	4	4
Parking Facilities Inspector	2	2
Parking Facilities Supervisor	1	1
Parking Meter Attendant	6	6
Parking Meter Data Collector	1	1
Public Information Supervisor	2	2

Economic Development	Position Detail	
	Mayor's Recommended FY2008-2009	Council Approved FY2008-2009
Receptionist	3	3
Secretary	3	3
Staff Helper/Internal	1	1
Workforce Development Coordinator	2	2