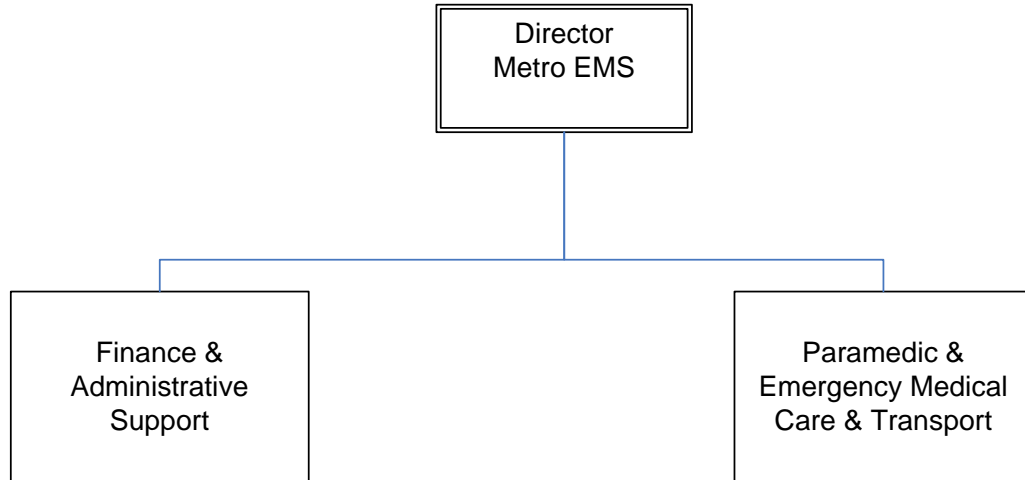




Louisville Metro Emergency Medical Services



LOUISVILLE METRO EMS

Mission

Louisville Metro Emergency Medical Services (LMEMS) endeavors to provide the highest quality 911 prehospital emergency medical care to those who visit, work and reside in the Louisville Metro area. Utilizing the latest advances in medical knowledge and technology, our skilled and experienced providers strive to treat both our patients and colleagues with compassion, dignity and respect.

Programs and Services

LMEMS provides 24 hours-a-day, seven-days-a-week prehospital emergency medical services to those who live and work in the 386-square-mile city of Louisville. Providing both basic and advanced life support emergency medical care, ambulance transport and technical rescue to the sick and injured, we are also committed to training, education, quality assurance, and providing medical direction and integrated response with Fire/First Responder services.

Goals & Indicators

During the 2007-2008 Fiscal Year, LMEMS will turn its focus toward quality assurance and the integration of new medical and operational technologies into patient care. Advanced treatment methods and new equipment will enhance the quality of our patient care and enable our providers to continue their progress toward meeting and exceeding our response time goals. We will also continue improving the level and quality of training our providers receive. Additionally, LMEMS will continue efforts to use quantitative research and data to further develop the system and to propose and research creative innovations in education, training and technology. LMEMS will utilize outcome-based performance measures to guide strategic deployment, medical protocol development, advanced technological and research initiatives, as well as comprehensive quality assurance and medical oversight programs. LMEMS will strive to operate the system in a fiscally responsible manner, keeping in mind the responsibility to act as good stewards of public funds. LMEMS will continue to meet, and strive to exceed accepted State Regulations and National Standards for EMS response.

Louisville Metro EMS

Budget Summary

	Prior Year Actual 2005-2006	Original Budget 2006-2007	Revised Budget 2006-2007	Mayor's Recommended 2007-2008	Council Approved 2007-2008
General Fund Appropriation	19,392,100	18,850,700	21,713,700	25,662,100	25,662,100
Agency Receipts	69,600	42,000	42,000	123,500	123,500
Federal Grants	60,000	60,000	60,000	0	0
State Grants	(38,100)	43,800	63,800	112,500	112,500
Total Revenue:	19,483,600	18,996,500	21,879,500	25,898,100	25,898,100
Personal Services	16,528,000	15,930,800	18,023,800	20,800,900	20,800,900
Contractual Services	578,900	558,400	545,400	1,017,200	1,017,200
Supplies	1,180,900	733,600	1,216,600	1,345,900	1,345,900
Equipment/Capital Outlay	109,100	89,900	106,900	112,800	112,800
Interdepartment Charges	1,086,800	1,592,000	1,893,000	2,527,500	2,527,500
Restricted & Other Proj Exp	0	91,800	93,800	93,800	93,800
Total Expenditure:	19,483,700	18,996,500	21,879,500	25,898,100	25,898,100
Expenditures By Activity					
Emergency Medical Services	14,918,500	14,329,300	16,422,300	19,078,200	19,078,200
AHA Regional Training Center	0	0	30,000	53,500	53,500
Disaster Relief	21,900	0	0	0	0
Finance & Administrative Support	4,461,600	4,513,000	5,253,000	6,603,500	6,603,500
Statewide AED Training Program	0	91,800	101,800	101,800	101,800
First Responder Program	38,700	50,400	50,400	50,400	50,400
KY BD EMS	0	12,000	22,000	10,700	10,700
Anthem Grant	43,000	0	0	0	0
Total Expenditure:	19,483,700	18,996,500	21,879,500	25,898,100	25,898,100

Louisville Metro EMS	Position Detail	
	Mayor's Recommended FY2007-2008	Council Approved FY2007-2008
Position Allocation (in Full-Time Equivalent)		
Full-time	289	289
Permanent Part-time	0	0
Seasonal/Other	0	0
Total Positions	289	289

Position Title

Accounting Clerk	7	7
Administrative Assistant	1	1
Assistant Director	2	2
Auto Service Worker II	1	1
Billing Clerk III	1	1
Business Manager I	1	1
Business Specialist	1	1
Emergency Medical Technician	153	153
EMS - Manager	2	2
EMS - Supervisor	13	13
EMT - Paramedic	97	97
Executive Administrator	3	3
Executive Director	1	1
Fleet Coordinator	1	1
Inventory Control Specialist	2	2
Storekeeper I	1	1
Storekeeper II	1	1
Systems Analyst	1	1