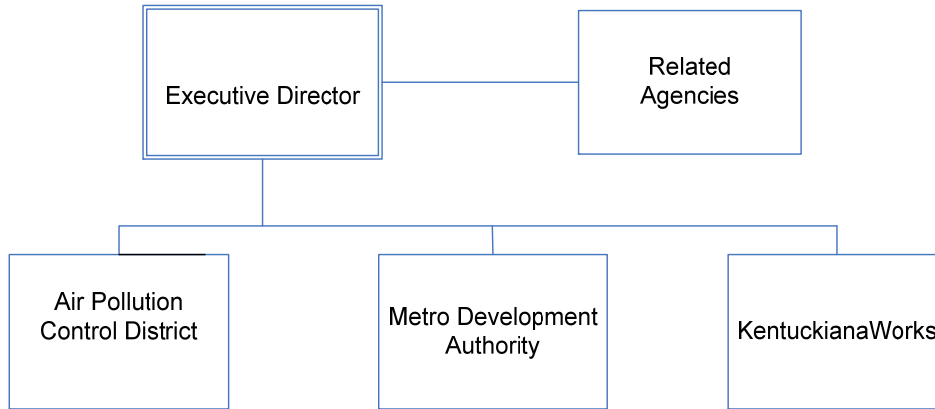




Economic Development



Related Agencies:	Kentucky World Trade Center
Downtown Development Corporation	Kentuckiana Regional Planning and Development Agency
Downtown Management District	Jefferson County Cooperative Extension Office
Metacyte	Jefferson County Soil and Water Conservation District
Riverport Authority/Louisville Metro Properties	Small Business Development Center
Greater Louisville Inc. (GLI)	Parking Authority of River City (PARC)
Metropolitan Scholars College	

ECONOMIC DEVELOPMENT

Mission

Foster a robust business climate by promoting job creation, meeting workforce needs, creating amenities within our region, and balancing growth by enhancing the environment, in order to improve the quality of life in Louisville Metro.

Vision

Louisville is a regional hub where businesses want to locate and expand, where residents want to live and work, and where socially and culturally exciting things happen.

Programs and Services

Metro Development Authority:

- Grow jobs by addressing the needs of start-up and small businesses, support existing businesses that wish to expand and assist companies looking to move to Louisville.
- Increase higher paying jobs by attracting headquarters to Louisville; identifying and supporting high growth existing businesses; and focusing on technology-related industries, businesses, and government agencies.
- Attract and retain bright, young professionals by direct contact and by creating the amenities that will make our city a place young professionals want to live.
- Increase, through cooperative efforts with KentuckianaWorks, the number of Louisville residents with Associate, Bachelors, and advanced degrees.
- Enhance the quality of life in all neighborhoods by developing access to goods, shopping, and services within the city's commercial corridors and Central Business District (CBD).

ECONOMIC DEVELOPMENT

Programs and Services (continued)

Metro Development Authority:

- Provide low interest and forgivable loan products to industrial and retail businesses locating in distressed neighborhoods and the CBD.
- Utilize incentives (Tax Increment Financing, Industrial Revenue Bonds, manufacturer's moratoriums, and Kentucky Economic Development Finance Authority programs) to encourage industrial, retail and commercial development in targeted areas.
- Provide advocacy services for businesses seeking building permits, licenses, and land development code approvals.
- Support effective mapping and on-line real estate databases to assist prospective or expanding companies.
- Recruit developers of retail, commercial, and industrial businesses to create large-scale amenities and destinations within the CBD and neighborhoods.
- Develop favorable business environments in Louisville's industrial and office parks, the CBD, and older industrial areas.
- Improve and update streetscape infrastructure in key business corridors, the CBD and redeveloping industrial areas.
- Reposition publicly- and privately-owned brownfield sites to capture new economic activity.
- Support efforts to effectively "brand" Louisville in order to enhance workforce and business attraction/retention activities.

ECONOMIC DEVELOPMENT

Programs and Services (continued)

Air Pollution Control District:

Engineering:

- **Permitting:** To assure all new industrial construction meets Louisville Metro standards by: providing engineering review of plans for new sources of air pollution and issuing permits containing emission limits and operational requirements; inspecting sources of air pollution to determine compliance with permit and other regulatory requirements; and creating emission inventories used in developing plans to attain Environmental Protection Agency (EPA) air quality standards.
- **Compliance:** To ensure compliance with Louisville's air pollution laws by inspecting sources of air pollution, ensuring compliance with monitoring and recordkeeping requirements, and providing compliance assistance.

Enforcement:

- Take formal enforcement actions and resolve noncompliance issues through monetary penalties and/or corrective actions.
- Permit and inspect gas stations and demolition and renovation projects involving asbestos.
- Investigate citizen complaints of odor, dust, smoke, and other nuisances.

Environmental Innovations:

- **Kentuckiana Air Education:** (KAIRE) is the Air Pollution Control District's community outreach and education program, enhancing our neighborhoods and quality of life to ensure environmental and economic health for residents. KAIRE's primary goal is to increase public awareness of the impact individual choices can have on local air quality and to encourage citizen participation in clean air efforts.
- **Monitoring:** To ensure the highest air quality for Louisville citizens by monitoring, collecting, processing, and reporting to the public all ambient air pollution data throughout the community for EPA-regulated pollutants.
- **Public Information:** To develop a comprehensive air quality strategy through land use, energy, transportation, sustainable development, outreach and other innovative approaches.
- **Program Planning:** To ensure that regulations are: clear; current with federal requirements; and streamlined to ensure the maximum air quality benefit with a minimum of paperwork for regulated sources.

ECONOMIC DEVELOPMENT

Programs and Services (continued)

KentuckianaWorks:

KentuckianaWorks is not a direct service provider, but invests millions of dollars in local organizations that provide education, training and employment services to job seekers and employers. KentuckianaWorks One-Stop Career Centers provide a full array of workforce services to employers and job seekers including career development, resume assistance, human resources, training and staffing services. Contractors operate Adult One-Stop Career Centers in the seven-county region, serving thousands of job seekers and hundreds of business customers each year as well as the Youth One-Stop Career Center at the Jefferson Education Center.

- **Kentuckiana College Access Center (KCAC):** The Kentuckiana College Access Center provides free educational, financial aid and career counseling to adults and youth to assist them in identifying and successfully completing their educational and career goals.
- **Project CREW:** CREW (Connecting Resources Education & Workforce) was initiated in the fall of 2003 as a partnership among Metropolitan College, Jefferson Community College, Career Resources, Inc. and KentuckianaWorks. This unique collaboration allows community college students and others to learn how potential programs of study connect with local career opportunities and what resources are available to help them stay in school and achieve their goals.
- **Youth Workforce Development Services:** KentuckianaWorks supports many organizations in the community that provide career, leadership, educational and personal development services to youth.

Strategic Goals

- Increase national recognition as an economic hotspot to help attract businesses and talent.
- Increase number of people who can fill high-paying, knowledge-based jobs.
- Update regional economic development strategy.
- Create a quality living environment that is a magnet for talented professionals and their families.
- Improve air quality to meet or exceed EPA standards.

ECONOMIC DEVELOPMENT

Operational Goals

- Assist clients and potential clients with site selection process.
- Provide financial incentives through local loan and grant programs to encourage business development.
- Create small area studies and implement streetscape improvement projects.
- Maintain contact and make new contacts with businesses in Louisville Metro.
- Facilitate approvals process for developers and property and business owners.
- Match companies to appropriate state tax incentives for location and/or expansion.
- Provide companies assistance in how to export goods and services.
- Manage the properties identified through the federal Base Reduction and Closure Act.
- Provide brownfield loans and grants, and advice to businesses looking to clean up contaminated sites.
- Provide center in West Louisville to enhance business start-up and early growth efforts, including counseling and financial services, and incubator facilities.
- Provide Geographic Information System (GIS) and economic data to assist businesses, economic development efforts, and other governmental agencies.
- Grow regional food economy by connecting suppliers and customers.
- Provide support to Talent Innovation Place Strategy implementation efforts, in order to promote Regional Competitiveness Strategy.
- Encourage appropriate business opportunities within City of Parks initiative.
- Participate in TIP Strategy Visioning Process to select and prioritize regional economic development programs and projects.
- Monitor and fund construction of Arena Garage.
- Maintain and staff PARC parking garages, surface lots, and on-street parking programs.
- Improve efficiency of citation collection efforts.
- Use new technologies to manage a more effective parking program.

ECONOMIC DEVELOPMENT

Operational Goals (continued)

- Utilize increased WIA (Workforce Investment Act) funding to help 500 additional people earn their Associate's degree by December 2009.
- Expand the services of the Kentuckiana College Access Center (KCAC) to serve at least 1,000 additional adults in our region.
- Improve "workforce system" to make it better known or understood by many employers and individual customers.
- Improve the construction training program to attract future funding.
- Work with state partners to submit a plan to the federal government to launch a Food Stamp employment and training (FSET) pilot program to draw down Federal matching dollars.
- Explore options, including the potential of utilizing Workforce Investment Act (WIA) funding, to spur expansion of Metropolitan College to other industries and employers.
- Continue implementation of the Strategic Toxic Air Reduction (STAR) program; work with the Board and the public to improve the program through clarifying amendments and resolution of implementation issues.
- Set standards, including timelines, for inspections and resolution of non-compliance issues through monetary penalties and/or corrective actions.
- Secure and maintain adequate staffing for engineering review of permit applications for new and existing sources of air pollution.
- Monitor ambient air, and review company reports, for compliance with clean air laws and creation of emission inventories.
- Secure Congestion Mitigation Air Quality and other funding to continue KAIRE outreach and other education programs.
- Develop and implement policies, programs and strategies to improve air quality through land use, energy, transportation, sustainable development, outreach and other new approaches.

Economic Development

Budget Summary

	Prior Year Actual 2007-2008	Original Budget 2008-2009	Revised Budget 2008-2009	Mayor's Recommended 2009-2010	Council Approved 2009-2010
General Fund Appropriation	8,513,300	8,691,800	8,700,800	6,982,000	7,162,000
Agency Receipts	11,634,600	13,235,400	13,265,300	13,299,000	13,299,000
Federal Grants	2,046,400	15,149,000	15,409,000	22,211,100	22,211,100
State Grants	69,900	0	500,000	0	0
Total Revenue:	22,264,200	37,076,200	37,875,100	42,492,100	42,672,100
Personal Services	8,355,100	9,977,300	9,800,600	8,955,900	8,955,900
Contractual Services	8,317,500	20,323,000	21,604,400	26,889,700	26,899,700
Supplies	84,600	244,700	231,700	219,800	219,800
Equipment/Capital Outlay	243,800	523,700	593,300	434,900	434,900
Interdepartment Charges	5,250,900	4,504,800	4,504,800	5,347,400	5,347,400
Restricted & Other Proj Exp	0	1,502,700	1,140,300	644,400	814,400
Total Expenditure:	22,251,900	37,076,200	37,875,100	42,492,100	42,672,100
Expenditures By Activity					
Economic Development	16,815,000	16,737,600	17,506,600	15,519,400	15,699,400
Air Pollution Control District	5,436,900	7,288,600	7,318,500	6,245,700	6,245,700
KentuckianaWorks	0	13,050,000	13,050,000	20,727,000	20,727,000
Total Expenditure:	22,251,900	37,076,200	37,875,100	42,492,100	42,672,100

Economic Development	Position Detail	
	Mayor's Recommended FY2009-2010	Council Approved FY2009-2010
Position Allocation (in Full-time Equivalents)		
Full-time	137	137
Part-time	1	1
Seasonal/Other	1	1
Total Positions	139	139

Position Title

Administrative Assistant	4	4
Administrative Clerk	5	5
Administrative Specialist	2	2
Administrative Supervisor II	1	1
Air Pollution Compliance Officer	6	6
Air Pollution Technician II	5	5
Assistant Director	5	5
Business Accountant I	1	1
Business Accountant II	4	4
Business Manager I	1	1
Business Manager II	1	1
Business Specialist	4	4
Community Outreach Coordinator	1	1
Director	2	2
Economic Development Coordinator	3	3
Economic Development Officer	6	6
Economic Development Supervisor	1	1
Education Manager	1	1
Engineer I	12	12
Engineer Supervisor	1	1
Environmental Coordinator	10	10
Environmental Engineer Coordinator	4	4
Environmental Engineer Manager	1	1
Environmental Engineer Specialist	1	1
Environmental Engineer Supervisor	2	2
Environmental Manager	2	2
Environmental Specialist	8	8
Environmental Supervisor	2	2
Executive Administrator	7	7
Executive Assistant	2	2
Geographic Information Systems Analyst	1	1
Grants Contract Coordinator	1	1
Information Systems Analyst	3	3
Local Area Network Analyst	1	1
Management Assistant	3	3
Parking Enforcement Officer I	2	2
Parking Facilities Coordinator	4	4
Parking Facilities Inspector	2	2
Parking Facilities Supervisor	1	1
Parking Meter Attendant	6	6
Parking Meter Data Collector	1	1

Economic Development	Position Detail	
	Mayor's Recommended FY2009-2010	Council Approved FY2009-2010
Public Information Supervisor	2	2
Receptionist	3	3
Secretary	1	1
Staff Helper	1	1
Workforce Development Coordinator	2	2