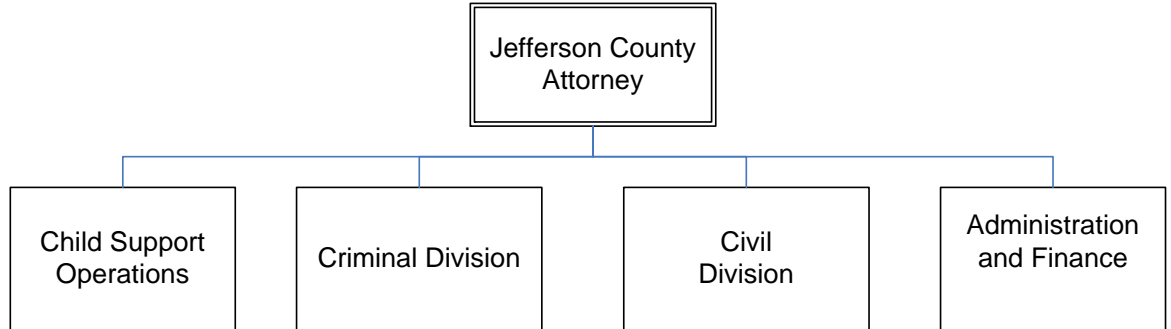




Jefferson County Attorney



JEFFERSON COUNTY ATTORNEY

Mission

The Jefferson County Attorney is an elected official who is charged by the Kentucky Constitution with the civil legal representation of the Louisville Metro government in litigation, approving certain Metro government public instruments as to legal form and contents, providing legal assistance to various Metro departments including the Metro Legislative Council; and representing the State in criminal and child support matters within the jurisdiction of the state's District Court in support of law enforcement arrests.

Programs and Services

Administration – general oversight and expertise in the areas of finance and human resources.

Criminal Division – Arraignment Court, Divisions for Felony/Misdemeanors, Criminal Complaints, Traffic, Juvenile, Mental Inquest/Disability, Family Court, Domestic Violence, Warrant Division and Legal Research.

Civil Division – advice to agencies, planning and zoning, real estate and tax, litigation, research and ordinance commission.

Child Support – prosecuting and collecting monies from individuals who are delinquent in the payment of their child support. This division is currently handling approximately 63,475 cases. Last year the JCAO Child Support Division collected in excess of 71.8 million dollars for the children and families of this community.

Goals & Indicators

- Promote the public safety and general welfare of the citizens of this community through vigorous prosecution.
- Provide legal representation to Louisville Metro Government, its officers, agents and employees.

Jefferson County Attorney

Budget Summary

	Prior Year Actual 2006-2007	Original Budget 2007-2008	Revised Budget 2007-2008	Mayor's Recommended 2008-2009	Council Approved 2008-2009
General Fund Appropriation	6,426,800	6,495,600	6,529,300	6,476,300	6,406,300
Agency Receipts	437,800	538,700	522,300	554,600	547,600
Federal Grants	100,100	115,300	115,300	0	0
State Grants	290,600	199,100	128,000	0	0
Total Revenue:	7,255,300	7,348,700	7,294,900	7,030,900	6,953,900
Personal Services	6,305,200	6,292,800	6,241,500	6,084,000	6,007,000
Contractual Services	861,600	836,200	677,200	637,100	637,100
Supplies	39,900	184,600	214,800	274,700	274,700
Equipment/Capital Outlay	14,500	15,000	15,000	15,000	15,000
Interdepartment Charges	200	20,100	20,100	20,100	20,100
Restricted & Other Proj Exp	0	0	126,300	0	0
Total Expenditure:	7,221,400	7,348,700	7,294,900	7,030,900	6,953,900
Expenditures By Activity					
Director's Office	1,046,600	1,101,500	1,101,500	1,105,600	1,093,000
Criminal Prosecution	1,761,500	1,787,800	1,787,800	1,921,200	1,899,800
Civil Litigation	3,910,500	3,957,300	3,957,300	3,767,900	3,724,900
Drug Court	502,800	502,100	448,300	236,200	236,200
Total Expenditure:	7,221,400	7,348,700	7,294,900	7,030,900	6,953,900

Jefferson County Attorney	Position Detail	
	Mayor's Recommended FY2008-2009	Council Approved FY2008-2009
Position Allocation (in Full-time Equivalents)		
Full-time	92	92
Permanent Part-time	17	17
Seasonal/Other	0	0
Total Positions	109	109

Position Title

Administrative Assistant	3	3
Administrator III	1	1
Assistant County Attorney	41	41
Asst Dir Bad Check/Restitution	1	1
Attorney I	2	2
Attorney II	2	2
Attorney III	1	1
Bad Check/Restitution Clerk	1	1
Case Manager	1	1
Chief of Staff	1	1
Clerk	6	6
Communications Manager	1	1
County Attorney	1	1
Court Liaison	1	1
Director Bad Check/Restitution	1	1
Director Civil Division	2	2
Director Community Services	1	1
Domestic Violence Statistician	1	1
DUI Victims Assistant	1	1
Executive Assistant	1	1
Executive Secretary	1	1
Human Resources Specialist	1	1
Juvenile Services Coordinator	1	1
Law Clerk	2	2
Legal Administrative Assistant	1	1
Legal Research Supervisor	1	1
Legal Secretary II	2	2
Legal Secretary	1	1
Legal Secretary I	2	2
Legislative Affairs Aide	1	1
Legislative Affairs Specialist	1	1
Office Manager	1	1
Paralegal	2	2
Program Administrator	1	1
Project Supervisor	2	2
Receptionist	1	1
Revenue Collections Specialist	1	1
Secretary	1	1
Senior Attorney	3	3
Specialist	1	1
Substance Abuse Counselor	4	4
Tax Clerk	1	1
Tax Division Supervisor	1	1
Victim Advocate	6	6