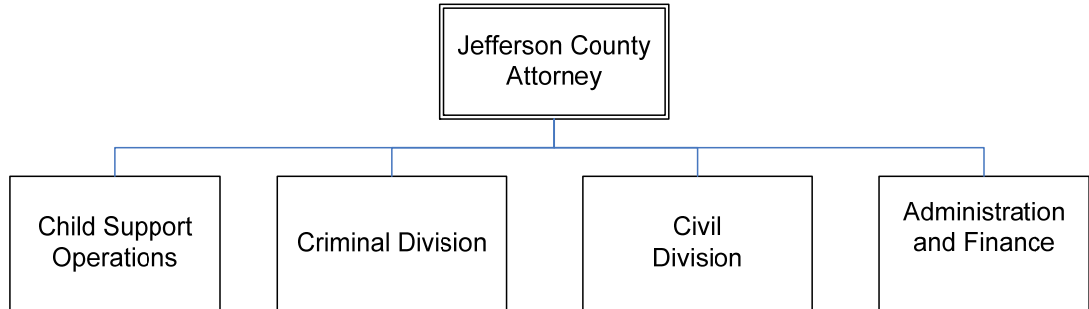




Jefferson County Attorney



JEFFERSON COUNTY ATTORNEY

Mission

The Jefferson County Attorney is an elected official who is charged by the Kentucky Constitution with the civil legal representation of the Louisville Metro Government in litigation, approving certain Metro Government public instruments as to legal form and contents, providing legal counsel to the Mayor, Metro Departments, and the Metro Legislative Council; and representing the State in criminal and child support matters within the jurisdiction of the state's District Court in support of law enforcement arrests.

Programs and Services

Administration – Provide general oversight and expertise in the areas of finance and human resources; oversight and assistance with resolution of all issues involving legal representation and services of all divisions of the JCAO; set policies and procedures for the Jefferson County Attorney's Office and assist all divisions with the implementation and enforcement of said policies and procedures.

Criminal Division – Staff Arraignment Court, Divisions for Felony/Misdemeanors, Criminal Complaints, Traffic, Juvenile, Mental Inquest/Disability, Family Court, Domestic Violence, Warrant Division and Legal Research.

Civil Division – Provide advice on planning and zoning, real estate and tax, litigation, research and ordinance commission.

Child Support – Prosecute and collect monies from individuals who are delinquent in the payment of their child support, approximately 64,000 cases. Last year the JCAO Child Support Division collected in excess of 76.9 million dollars for the children and families of this community.

Goals & Indicators

- Promote the public safety and general welfare of the citizens of this community through vigorous prosecution.
- Provide legal representation to Louisville Metro Government, its officers, agents and employees.

Jefferson County Attorney

Budget Summary

	Prior Year Actual 2007-2008	Original Budget 2008-2009	Revised Budget 2008-2009	Mayor's Recommended 2009-2010	Council Approved 2009-2010
General Fund Appropriation	6,584,500	6,406,300	6,406,300	6,406,300	6,406,300
Agency Receipts	605,900	547,600	551,500	278,800	278,800
Total Revenue:	7,190,400	6,953,900	6,957,800	6,685,100	6,685,100
Personal Services	6,240,800	6,007,000	6,007,000	6,098,000	6,098,000
Contractual Services	646,900	637,100	637,100	530,000	530,000
Supplies	40,800	274,700	278,600	31,000	31,000
Equipment/Capital Outlay	1,700	15,000	15,000	15,000	15,000
Interdepartment Charges	20,100	20,100	20,100	11,100	11,100
Total Expenditure:	6,950,300	6,953,900	6,957,800	6,685,100	6,685,100
Expenditures By Activity					
Director's Office	1,100,100	1,093,000	1,093,000	1,002,000	1,002,000
Criminal Prosecution	1,909,200	1,899,800	1,899,800	1,985,000	1,985,000
Civil Litigation	3,924,400	3,724,900	3,724,900	3,698,100	3,698,100
Drug Court	16,600	236,200	240,100	0	0
Total Expenditure:	6,950,300	6,953,900	6,957,800	6,685,100	6,685,100

Jefferson County Attorney	Position Detail	
	Mayor's Recommended FY2009-2010	Council Approved FY2009-2010
Position Allocation (in Full-time Equivalents)		
Full-time	86	86
Part-time	15	15
Seasonal/Other	0	0
Total Positions	101	101

Position Title

Administrative Assistant	3	3
Administrator III	1	1
Assistant County Attorney	41	41
Assistant Director Bad Check/Restitution	1	1
Attorney I	2	2
Attorney II	2	2
Attorney III	1	1
Bad Check/Restitution Clerk	1	1
Chief of Staff	1	1
Clerk	5	5
Communications Manager	1	1
County Attorney	1	1
Court Liaison	1	1
Director Bad Check/Restitution	1	1
Director Civil Division	2	2
Director Community Services	1	1
Domestic Violence Statistician	1	1
DUI Vicitims Assistant	1	1
Executive Assistant	1	1
Executive Secretary	1	1
Human Resources Specialist	1	1
Juvenile Services Coordinator	1	1
Law Clerk	2	2
Legal Administrative Assistant	1	1
Legal Research Supervisor	1	1
Legal Secretary	3	3
Legal Secetary II	2	2
Legislative Affairs Aide	1	1
Legislative Affairs Specialist	1	1
Office Manager	1	1
Paralegal	2	2
Program Administrator	1	1
Receptionist	1	1
Revenue Collections Specialist	1	1
Secretary	1	1
Senior Attorney	3	3
Specialist	1	1
Tax Clerk	1	1
Tax Division Supervisor	1	1
Victim Advocate	6	6