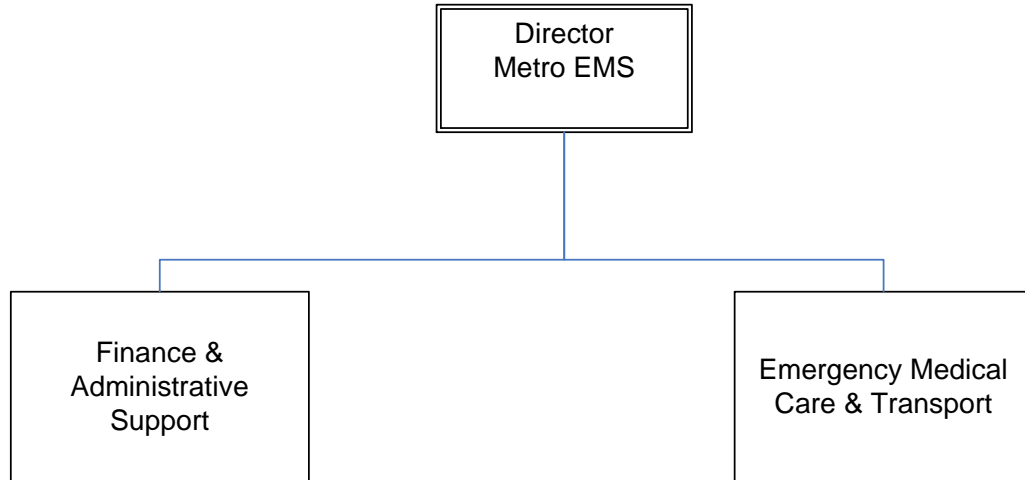




# Louisville Metro Emergency Medical Services



## LOUISVILLE METRO EMS

### Mission

Louisville Metro Emergency Medical Services (LMEMS) endeavors to provide the highest quality 911 prehospital emergency medical care to those who visit, work and reside in the Louisville Metro area. Utilizing the latest advances in medical knowledge and technology, our skilled and experienced providers strive to treat both our patients and colleagues with compassion, dignity and respect.

### Programs and Services

LMEMS provides 24-hour-a-day, seven-day-a-week prehospital emergency medical services to those who live and work in the 386-square-mile city of Louisville. Providing both basic and advanced life support emergency medical care, ambulance transport and technical rescue to the sick and injured, we are also committed to training, education, quality assurance, and providing medical direction and integrated response with Fire/First Responder services.

### Goals & Indicators

During the 2008-2009 Fiscal Year, LMEMS will continue its focus on quality assurance and the integration of new medical and operational technologies into patient care. Advanced treatment methods and new equipment will enhance the quality of our patient care and enable our providers to continue their progress toward meeting our response time goals. We will also continue improving the level and quality of training our providers receive. Additionally, LMEMS will continue efforts to use quantitative research and data to further develop the system and to propose and research creative innovations in education, training and technology. LMEMS will utilize outcome-based performance measures to guide strategic deployment, medical protocol development, advanced technological and research initiatives, as well as comprehensive quality assurance and medical oversight programs. LMEMS will strive to operate the system in a fiscally responsible manner, keeping in mind the responsibility to act as good stewards of public funds. LMEMS will continue to meet accepted State Regulations and National Standards for EMS response.

**Louisville Metro EMS**

**Budget Summary**

	<b>Prior Year Actual 2006-2007</b>	<b>Original Budget 2007-2008</b>	<b>Revised Budget 2007-2008</b>	<b>Mayor's Recommended 2008-2009</b>	<b>Council Approved 2008-2009</b>
General Fund Appropriation	22,933,800	25,662,100	25,662,100	27,165,600	26,863,600
Agency Receipts	117,000	123,500	124,800	116,300	116,300
State Grants	17,300	112,500	113,600	104,200	104,200
<b>Total Revenue:</b>	<b>23,068,100</b>	<b>25,898,100</b>	<b>25,900,500</b>	<b>27,386,100</b>	<b>27,084,100</b>
Personal Services	19,315,700	20,800,900	20,590,700	21,863,600	21,511,600
Contractual Services	684,400	1,017,200	963,800	1,125,200	1,175,200
Supplies	1,156,100	1,345,900	1,345,900	1,327,800	1,327,800
Equipment/Capital Outlay	60,500	112,800	26,300	113,500	113,500
Interdepartment Charges	1,851,400	2,527,500	2,527,500	2,848,000	2,848,000
Restricted & Other Proj Exp	0	93,800	446,300	108,000	108,000
<b>Total Expenditure:</b>	<b>23,068,100</b>	<b>25,898,100</b>	<b>25,900,500</b>	<b>27,386,100</b>	<b>27,084,100</b>
<b>Expenditures By Activity</b>					
Emergency Medical Services	17,794,800	19,078,200	19,079,500	20,186,800	19,834,800
AHA Regional Training Center	57,500	53,500	53,500	53,000	53,000
Finance & Administrative Support	5,135,800	6,603,500	6,603,500	6,988,900	7,038,900
Statewide AED Training Program	8,300	101,800	101,800	93,500	93,500
First Responder Program	56,500	50,400	50,400	49,400	49,400
KY BD EMS	9,000	10,700	11,800	10,700	10,700
Anthem Grant	6,200	0	0	3,800	3,800
<b>Total Expenditure:</b>	<b>23,068,100</b>	<b>25,898,100</b>	<b>25,900,500</b>	<b>27,386,100</b>	<b>27,084,100</b>

<b>Louisville Metro EMS</b>	<b>Position Detail</b>	
	Mayor's Recommended FY2008-2009	Council Approved FY2008-2009
<b>Position Allocation (in Full-time Equivalents)</b>		
<b>Full-time</b>	<b>285</b>	<b>285</b>
<b>Permanent Part-time</b>	<b>8</b>	<b>8</b>
<b>Seasonal/Other</b>	<b>0</b>	<b>0</b>
<b>Total Positions</b>	<b>293</b>	<b>293</b>

***Position Title***

Accounting Clerk	7	7
Administrative Assistant	1	1
Assistant Director	2	2
Auto Service Worker II	1	1
Billing Clerk III	1	1
Business Specialist	2	2
Emergency Medical Technician	164	164
EMS - Manager	1	1
EMS - Supervisor	13	13
EMT - Paramedic	90	90
Executive Administrator	3	3
Executive Director	1	1
Fee Collection Supervisor	1	1
Fleet Coordinator	1	1
Inventory Control Specialist	2	2
Storekeeper I	1	1
Storekeeper II	1	1
Systems Analyst	1	1