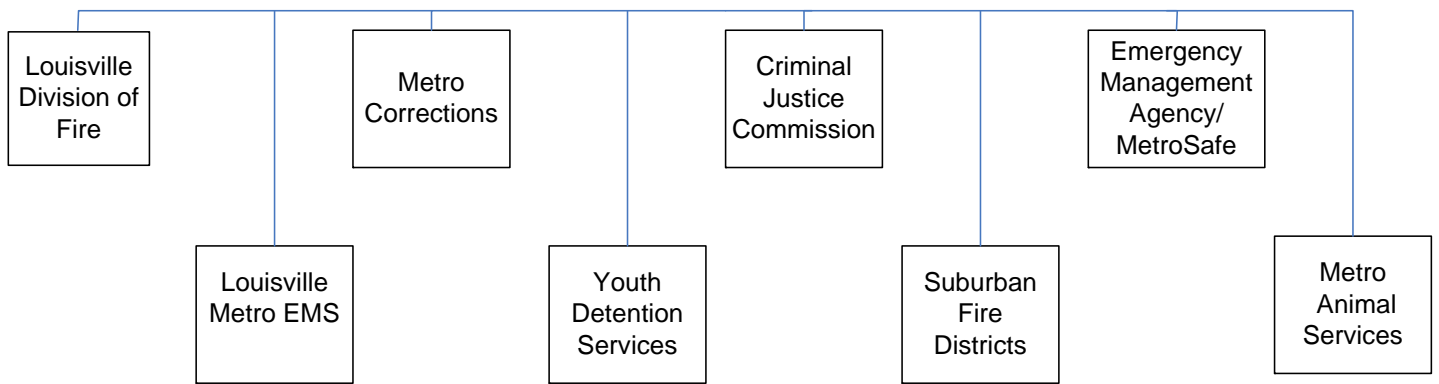




# Public Protection



## PUBLIC PROTECTION

### **Mission**

The Department for Public Protection will promote the safety of the public and animals by providing effective and professional services ranging from prevention, planning, and all hazards preparedness to emergency response, detention and animal care and shelter.

### **Department Overview**

The Department of Public Protection incorporates eight divisions responsible for emergency services, public and animal safety, criminal justice planning, and detention services. The divisions comprising the department include: Louisville Division of Fire, liaison to the Suburban Fire Districts, Louisville Metro Emergency Medical Services, Emergency Management Agency/MetroSafe, Louisville Metro Department of Corrections, Metro Youth Detention Services, Metro Criminal Justice Commission, and Metro Animal Services.

### **Departments & Services**

Louisville Division of Fire  
 Louisville Metro EMS  
 Emergency Management Agency/MetroSafe  
 Metro Corrections  
 Youth Detention Services  
 Criminal Justice Commission  
 Firefighters Pension Fund  
 Policemen's Retirement Fund  
 Suburban Fire Districts  
 Metro Animal Services

**Public Protection**

**Budget Summary**

	<b>Prior Year Actual 2007-2008</b>	<b>Original Budget 2008-2009</b>	<b>Revised Budget 2008-2009</b>	<b>Mayor's Recommended 2009-2010</b>	<b>Council Approved 2009-2010</b>
General Fund Appropriation	145,747,800	149,407,100	149,479,000	144,095,200	144,095,200
Agency Receipts	10,682,200	10,281,700	10,299,300	13,608,200	13,608,200
Federal Grants	740,300	870,400	1,710,500	5,084,700	5,084,700
State Grants	5,677,100	5,682,100	5,693,300	4,996,200	4,996,200
<b>Total Revenue:</b>	<b>162,847,400</b>	<b>166,241,300</b>	<b>167,182,100</b>	<b>167,784,300</b>	<b>167,784,300</b>
Personal Services	128,810,800	129,017,500	125,178,600	126,338,600	126,338,600
Contractual Services	21,745,100	23,698,100	23,818,900	24,580,700	24,580,700
Supplies	4,857,500	6,018,300	5,803,800	5,888,900	5,888,900
Equipment/Capital Outlay	573,700	497,300	758,500	681,100	681,100
Interdepartment Charges	6,784,900	6,834,300	6,833,800	6,002,300	6,002,300
Restricted & Other Proj Exp	0	175,800	4,788,500	4,292,700	4,292,700
<b>Total Expenditure:</b>	<b>162,772,000</b>	<b>166,241,300</b>	<b>167,182,100</b>	<b>167,784,300</b>	<b>167,784,300</b>
<b>Expenditures By Activity</b>					
Louisville Fire Department	55,167,800	53,454,600	53,454,800	50,136,000	50,136,000
Metro EMS	24,779,000	27,084,100	27,094,300	25,574,200	25,574,200
Emergency Management Agency/MetroSafe	15,612,300	16,535,900	16,833,000	20,114,500	20,114,500
Metro Corrections	48,469,500	50,435,500	50,500,400	50,695,800	50,695,800
Youth Detention Services	9,700,300	9,712,200	9,712,200	9,845,700	9,845,700
Criminal Justice Commission	5,890,400	5,846,200	6,406,900	8,078,000	8,078,000
Metro Animal Services	3,152,700	3,172,800	3,180,500	3,340,100	3,340,100
<b>Total Expenditure:</b>	<b>162,772,000</b>	<b>166,241,300</b>	<b>167,182,100</b>	<b>167,784,300</b>	<b>167,784,300</b>