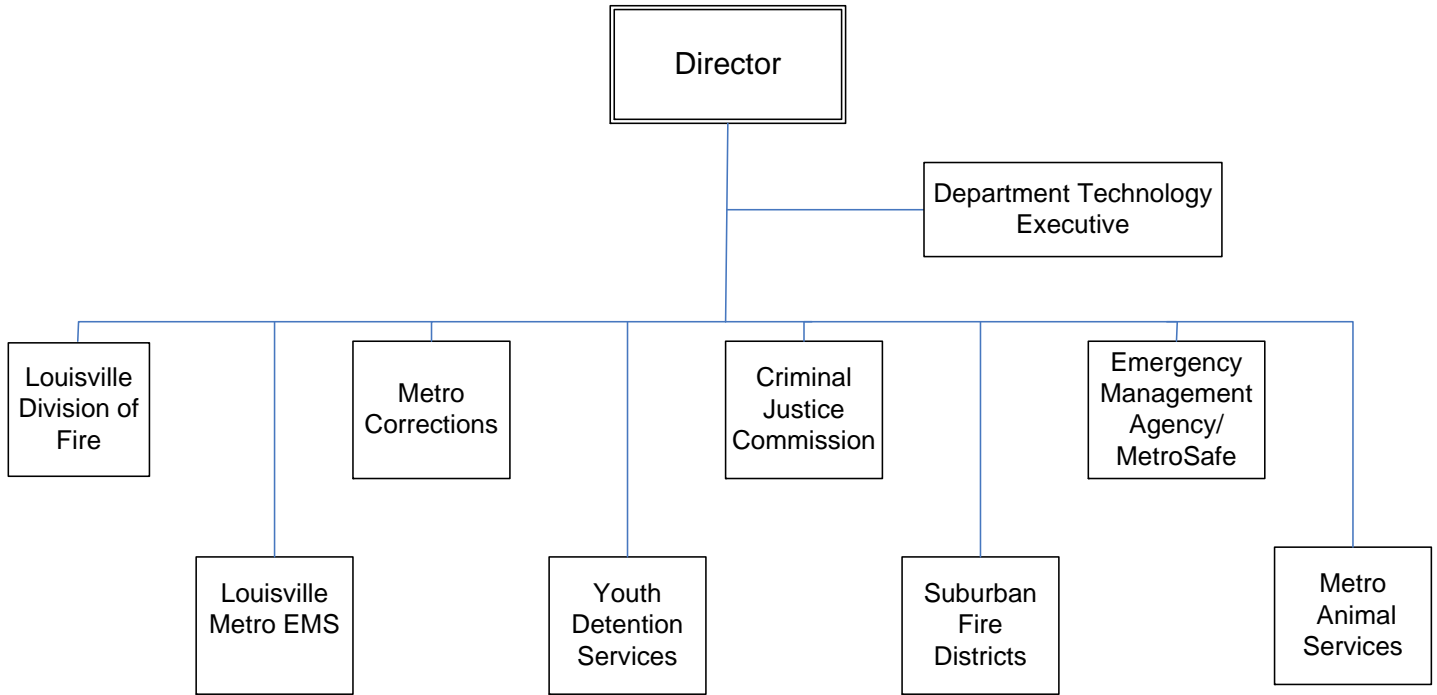




Public Protection



PUBLIC PROTECTION

Mission

The Department for Public Protection will promote the safety of the public and animals by providing effective and professional services ranging from prevention, planning, and all hazards preparedness to emergency response, detention and animal care and shelter.

Department Overview

The Department of Public Protection incorporates eight divisions responsible for emergency services, public and animal safety, criminal justice planning, and detention services. The divisions comprising the department include: Louisville Division of Fire, liaison to the Suburban Fire Districts, Louisville Metro Emergency Medical Services, Emergency Management Agency/MetroSafe, Louisville Metro Department of Corrections, Metro Youth Detention Services, Metro Criminal Justice Commission, and Metro Animal Services.

Included in the financial structure of this department are the following three agencies:

Suburban Fire Districts: Fire and emergency services outside the Urban Services District are provided by the 18 Suburban Fire Protection Districts. These fire districts are made up of approximately 560 volunteer and 380 career firefighters, who man 42 fire stations placed strategically through the suburban service area. Last year collectively, the Suburban Fire Protection Districts responded to nearly 32,000 calls for service, including 16,360 medical assistance responses with Louisville Metro EMS.

Louisville Firefighters Pension Fund: The Louisville Firefighters Pension Fund was established in 1953 under enabling legislation contained in KRS 95.290, and Chapter 35 of the codified general ordinances of the Louisville-Jefferson County Metro Government (as amended). The Fund is managed by an eight-member board of trustees, including one Ex-Officio member of the Louisville Metro Council who is appointed by the President of the Council. The remaining seven members are elected beneficiaries who serve four year terms.

Policemen's Retirement Fund: The Policemen's Retirement Fund was established and is continued under the authority of KRS 95.290 and KRS 67C.107(5) as a retirement and benefit fund for certain members of the Police Department hired before April 1, 1985, their dependents and beneficiaries. The Fund conducts all of the business to be transacted, investment of all monies and all of its accumulated reserves, which consists of cash, securities and other property held. The responsibility for the proper operation of the Fund and the direction of the policies are vested in a six member Board of Trustees, comprised of an ex-official and member of the Metro Council appointed by the Council President and five elected members of the Fund who serve four year terms.

PUBLIC PROTECTION

Departments & Services

Louisville Division of Fire
Louisville Metro EMS
Emergency Management Agency/MetroSafe
Metro Corrections
Youth Detention Services
Criminal Justice Commission
Firefighters Pension Fund
Policemen's Retirement Fund
Suburban Fire Districts
Metro Animal Services

Public Protection

Budget Summary

	Prior Year Actual 2006-2007	Original Budget 2007-2008	Revised Budget 2007-2008	Mayor's Recommended 2008-2009	Council Approved 2008-2009
General Fund Appropriation	131,490,600	144,994,200	145,176,800	151,222,600	149,407,100
Agency Receipts	9,950,200	10,769,900	10,910,500	10,394,700	10,281,700
Federal Grants	929,000	1,238,100	1,586,100	870,400	870,400
State Grants	5,223,100	5,284,800	5,285,900	5,771,300	5,682,100
Total Revenue:	147,592,900	162,287,000	162,959,300	168,259,000	166,241,300
Personal Services	118,315,300	127,401,100	126,436,000	131,085,200	129,017,500
Contractual Services	18,371,400	21,537,100	21,507,200	23,648,100	23,698,100
Supplies	4,926,300	5,346,800	5,502,000	6,018,300	6,018,300
Equipment/Capital Outlay	314,100	831,400	818,900	497,300	497,300
Interdepartment Charges	5,643,400	6,437,400	6,413,700	6,834,300	6,834,300
Restricted & Other Proj Exp	0	733,200	2,281,500	175,800	175,800
Total Expenditure:	147,570,500	162,287,000	162,959,300	168,259,000	166,241,300
Expenditures By Activity					
Louisville Fire	49,198,100	54,673,100	54,748,100	54,274,000	53,454,600
Metro EMS	23,068,100	25,898,100	25,900,500	27,386,100	27,084,100
Emergency Management Agency/ MetroSafe	14,929,200	16,050,400	16,263,600	16,710,600	16,535,900
Metro Corrections	43,841,800	47,683,800	47,690,100	51,015,800	50,435,500
Youth Detention Services	8,767,700	8,986,400	8,986,400	9,816,100	9,712,200
Criminal Justice Commission	4,960,600	6,136,900	6,251,300	5,852,700	5,846,200
Office of Cabinet Secretary	150,200	0	0	0	0
Metro Animal Services	2,654,800	2,858,300	3,119,300	3,203,700	3,172,800
Total Expenditure:	147,570,500	162,287,000	162,959,300	168,259,000	166,241,300