




*Safe Practices
For Drivers and Pedestrians*





Why should we be interested in pedestrian safety?

- People who walk and ride bikes instead of driving their cars reduce the amount of traffic and congestion on the road, making our job easier.
- They make cities healthier by reducing the amount of air pollution created.
- Bicycle and pedestrian collisions have a low frequency rate, but a high severity rate.
- A single pedestrian accident can cost over a million dollars.



Why should we be interested in pedestrian safety?

- Per mile traveled, pedestrians are 36 times more likely to die in a collision than drivers.
- *Nationwide, 5.4 % of all trips are made on foot, but 13 % of all traffic fatalities are pedestrians.*
- Pedestrian fatality rates in the United States are far higher than in other industrialized countries. In both Germany and the Netherlands the fatality rate was 26 deaths per billion kilometers walked, while in the United States the rate was 364 deaths per billion kilometers walked — fourteen times.

Why should we be interested in pedestrian safety?

- In many areas, intersections with crosswalks may be as much as a half-mile apart, leaving pedestrians with no safe way to cross the street.
- Of the pedestrian deaths for which information is recorded, almost 60 percent (59.1%) occurred in places where no crosswalk was available.



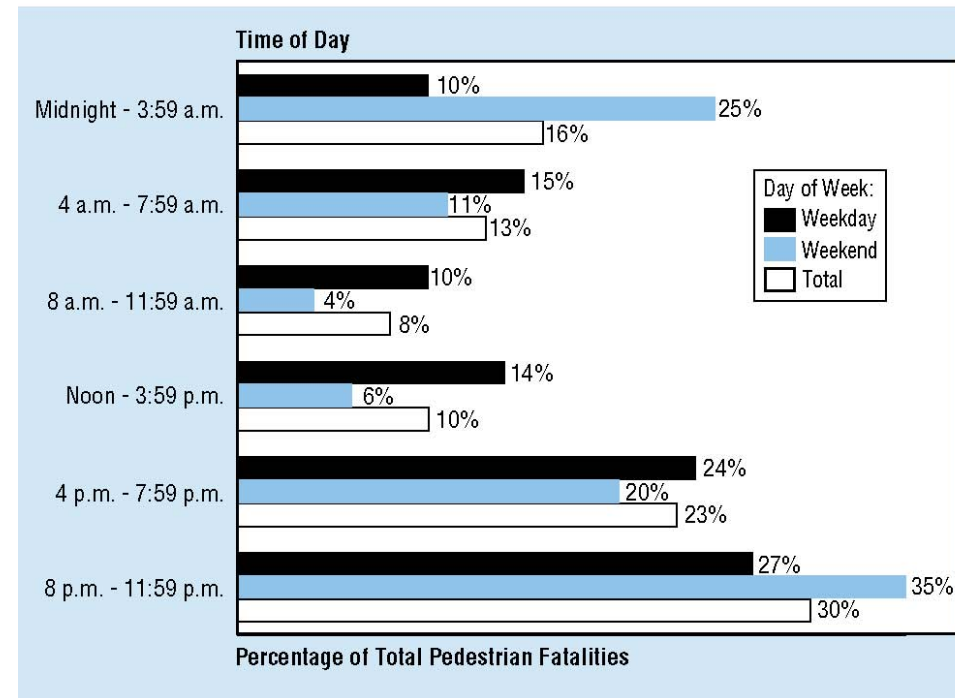


Pedestrians

National Statistics for Pedestrians

- In 2007, 4,654 pedestrians died in traffic crashes
- 70,000 pedestrians were injured in traffic accidents
- 85% of all nonmotorist fatalities are pedestrians.
- 78% of pedestrian fatalities occur at non-intersections.
- 88% occur in normal weather conditions and 64% occur at night.
- In 2005, the proportion of pedestrian deaths was much greater on Friday and Saturday.

Pedestrian Fatalities by Time of Day and Day of Week, 2007





National Statistics for Pedestrians

Walking is far more dangerous than flying or driving, per mile traveled:

- 0.16 deaths per 100,000,000 miles aboard an airplane.
- 1.4 deaths per 100,000,000 miles in a car.
- Almost 50 deaths per 100,000,000 miles walked.

Top causes of pedestrian accidents

1. Mid-block dart out
2. Intersection dash
3. Vehicle turn or merge
4. Multiple threats (a stopped vehicle at a crosswalk blocks the view of another driver approaching)
5. Backing up
6. Bus stop related
7. Vendor related



2004-2008 Injuries and fatalities

Louisville Metro 2004 - 2008 Bike/Ped Injuries and Fatalities

Legend

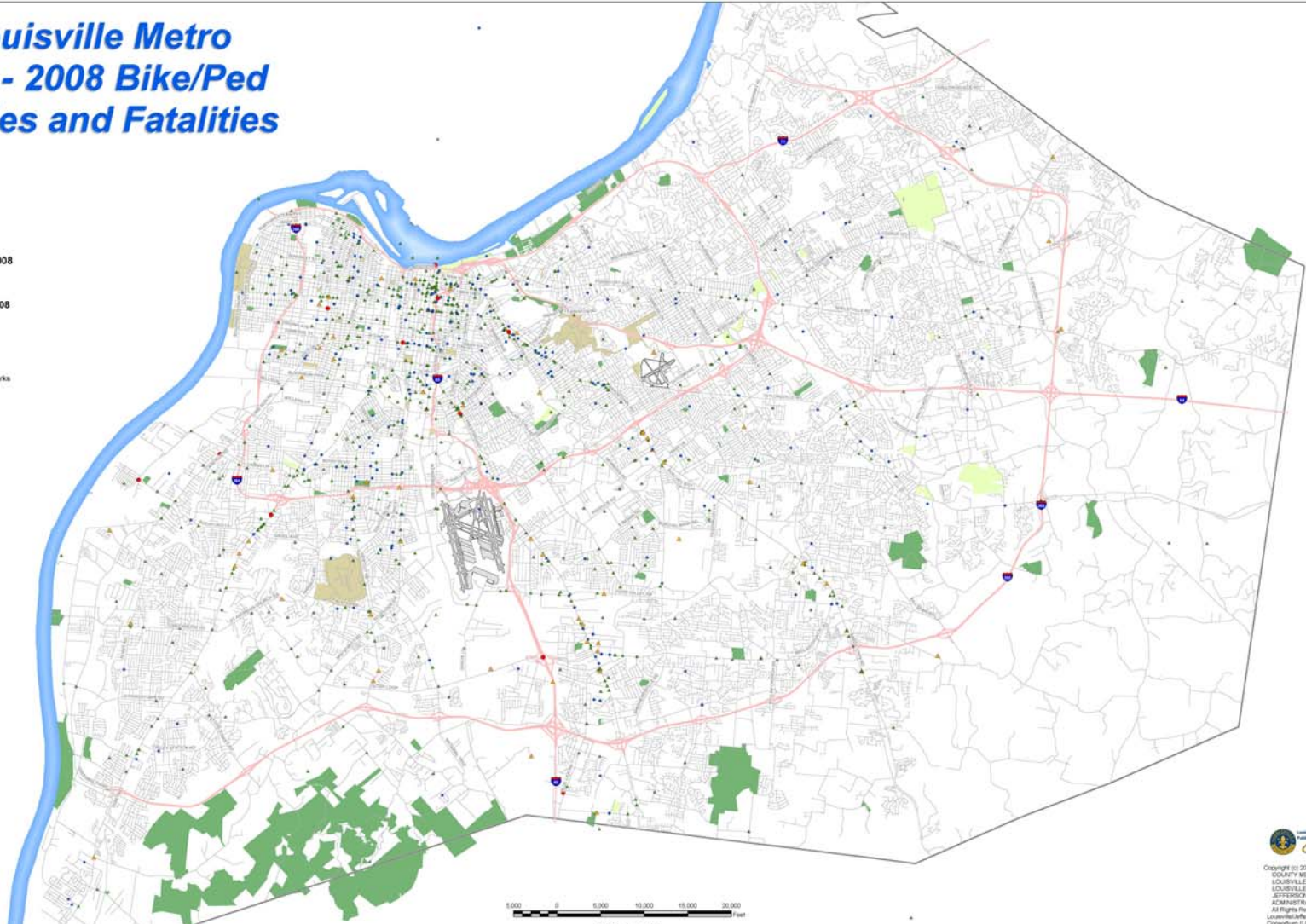
Bike Data 2004-2008

- Killed
- Injured

Ped Data 2004-2008

- Killed
- Injured

- Metro Parks
- Olmsted Parks
- State & Local Parks



Copyright © 2008 LOUISVILLE AND JEFFERSON COUNTY METROPOLITAN SEWER DISTRICT (MSD), LOUISVILLE WATER COMPANY (LWC), LOUISVILLE METRO GOVERNMENT and JEFFERSON COUNTY PROPERTY VALUATION ADMINISTRATION (PVA).

All Rights Reserved.
Louisville/Jefferson County Information Consortium (LJCIC), a Jefferson County Municipality, based cooperative project of Louisville/Jefferson Metro Government, Louisville Water Company, Metropolitan Sewer District, Property Valuation Administration.

No part of this map may be reproduced or transmitted in any form or by any means, electronic or mechanical, including photocopying and recording, or by any information storage and retrieval system, without the prior written permission of the Louisville/Jefferson Metro Government.

FILE: MAPS\MAPS_LATE2008\Line_Totals.mxd



Safe Driving Practices Around Pedestrians



Safe Driving Practices Around Pedestrians

- Increase your defensive driving "scan and search" to include pedestrians along the road and on the sidewalks.
- Keeping your windshield clean, so that pedestrians are more visible, is one of the biggest things you can do to reduce pedestrian accidents.





Safe Driving Practices Around Pedestrians

- Speeding is a major contributing factor in motor vehicle accidents of all types and has serious consequences when a pedestrian is involved.

REMEMBER: Slow down and pay attention to signs indicating the presence of pedestrians

- Be alert to pedestrians during left-hand turns. Just as with cyclists, a pedestrian is four times more likely to be hit by a motor vehicle that is turning left than by one that is turning right.

REMEMBER: the left turning maneuver is more demanding, particularly for older drivers.

Safe Driving Practices Around Pedestrians

- Children under 8 years old are not capable of safely navigating around traffic.
- The American Academy of Pediatrics reports that a young child's
 - Awareness of sounds and the direction from which they emanate
 - Their peripheral vision
 - Their focus and concentration
- Are not sufficiently developed until after 8 years of age.



Safe Driving Practices Around Pedestrians

- One study showed that 90% of street crossings made by children in K through 3rd grade were in error.
- If you expect children under 8 near the street, to cross incorrectly, you will be right 9 out of 10 times.



Safe Driving Practices Around Pedestrians

- Areas around colleges and universities should also receive special attention.
- Expect students to be darting out, not paying attention to signals or traffic, or trying to catch the tail end of a walk signal, ending up still in the road when the light turns green.
- The same holds true for public schools during peak hours in the morning and afternoon.



Safe Driving Practices Around Pedestrians

- Slow down! Especially in school zones and other areas rich with pedestrians.
- If a car going 20 mph hits a person, there is a 95% chance that the person will survive.
- If the car is traveling 30 mph, the person has slightly better than a 50% of survival.
- At 40 mph, only 15% of people struck at this speed can be expected to survive.



Safe Driving Practices Around Pedestrians

- During the summer months, operators driving near pools and parks should increase their search for children who may dart out.
- Expect more people to cross evening and weekends.



Safe Driving Practices Around Pedestrians



- Everyone knows to be alert when a ball comes bouncing into the street but statistically the same or more caution should be exercised when approaching an ice cream truck or other street vendor.
- Joggers are a special hazard. Some of them violate traffic rules because they don't want to slow down or break their stride at intersections and many wear headphones, which takes away their ability to hear traffic noises.

Safe Driving Practices Around Pedestrians

- Older pedestrians account for 16% of all pedestrian fatalities.
- Older pedestrians walk slower, which makes them more difficult for the eye to pick up.
- They need more time to cross the street.
- Areas around retirement homes, senior centers, and nursing homes present an increased hazard.



Safe Driving Practices Around Pedestrians

- Developments and neighborhoods that don't have sidewalks means pedestrians may be walking in the street, increasing the hazard.
- This hazard is compounded in the winter months when the low angle of sunlight and the tendency to wear darker clothes makes them more difficult to see.



Safe Driving Practices Around Pedestrians

- Entertainment areas, like 6th & Ali, or Bardstown Road are another potential hazard. 31% of all pedestrian fatalities involve an intoxicated pedestrian. Some people think that if they are too drunk to drive home, they will just walk, which turns out to be not much safer.



Safe Driving Practices Around Pedestrians

- Be alert to unusual pedestrian behavior around construction areas.
- Many times construction areas or activities force the pedestrian to walk out into the street.
- Pedestrians may be distracted because they are watching the construction activities and not paying attention to traffic.





*For bike and pedestrian
accident prevention,
give the road your full
attention.*