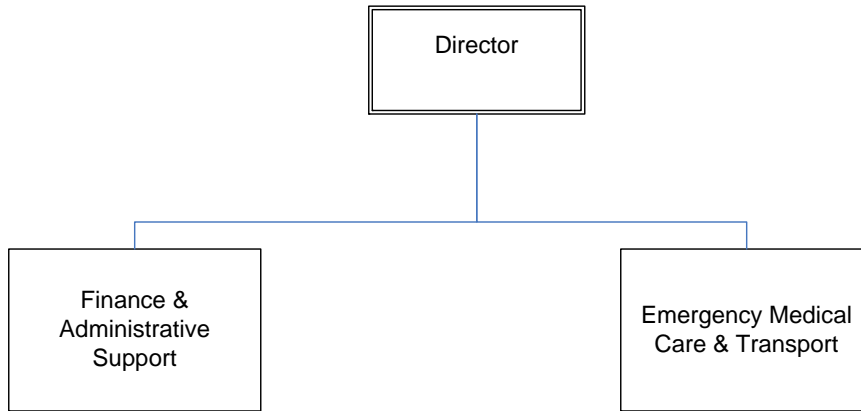




# Louisville Metro Emergency Medical Services



## LOUISVILLE METRO EMS

### Mission

Provide rapid, evidence-based pre-hospital emergency medical care, anytime, anywhere.

### Programs and Services

Louisville Metro Emergency Medical Services (LMEMS) provides 24-hour-a-day, seven-day-a-week pre-hospital emergency medical services to those who live and work in the 386-square-mile city of Louisville; provides both basic and advanced life support emergency medical care, ambulance transport and technical rescue to the sick and injured; provides training, education, quality assurance, and medical direction; and integrated response with Fire/First Responder services.

### Goals & Indicators

During the 2009-2010 Fiscal Year, LMEMS will:

- Renew our efforts to meet stated national performance goals by using real-time data and analytical information to direct system operations;
- Grow a service of clinicians, not technicians, by: developing our Training and Education Division; rolling out additional new skills and technology to our personnel while measuring their skill retention; and deploying medical and leadership training for officers and preceptors;
- Continue the development of the Operations Department so that its function is secondary to the practice of pre-hospital medicine by restructuring our officer complement into cross-functional positions; and,
- Work toward the development of a self-sustaining business model while creating a suite of integrated analytical reports from the new billing technology in an effort to professionalize billing services.

**Louisville Metro EMS**

**Budget Summary**

	<b>Prior Year Actual 2007-2008</b>	<b>Original Budget 2008-2009</b>	<b>Revised Budget 2008-2009</b>	<b>Mayor's Recommended 2009-2010</b>	<b>Council Approved 2009-2010</b>
General Fund Appropriation	24,693,800	26,863,600	26,863,500	25,372,900	25,372,900
Agency Receipts	73,400	116,300	116,400	97,100	97,100
State Grants	11,800	104,200	114,400	104,200	104,200
<b>Total Revenue:</b>	<b>24,779,000</b>	<b>27,084,100</b>	<b>27,094,300</b>	<b>25,574,200</b>	<b>25,574,200</b>
Personal Services	20,164,500	21,511,600	20,260,800	20,835,800	20,835,800
Contractual Services	741,500	1,175,200	1,113,600	1,331,800	1,331,800
Supplies	1,013,800	1,327,800	1,331,900	1,019,300	1,019,300
Equipment/Capital Outlay	26,300	113,500	62,300	65,200	65,200
Interdepartment Charges	2,832,900	2,848,000	2,848,000	2,224,800	2,224,800
Restricted & Other Proj Exp	0	108,000	1,477,700	97,300	97,300
<b>Total Expenditure:</b>	<b>24,779,000</b>	<b>27,084,100</b>	<b>27,094,300</b>	<b>25,574,200</b>	<b>25,574,200</b>
<b>Expenditures By Activity</b>					
Emergency Medical Services	18,652,900	19,834,800	19,834,800	19,214,700	19,214,700
AHA Regional Training Center	37,900	53,000	53,100	53,300	53,300
Finance & Administrative Support	6,059,700	7,038,900	7,038,800	6,171,800	6,171,800
Statewide AED Training Program	0	93,500	93,500	93,500	93,500
First Responder Program	16,700	49,400	49,400	26,400	26,400
KY BD EMS	11,800	10,700	20,900	10,700	10,700
Anthem Grant	0	3,800	3,800	3,800	3,800
<b>Total Expenditure:</b>	<b>24,779,000</b>	<b>27,084,100</b>	<b>27,094,300</b>	<b>25,574,200</b>	<b>25,574,200</b>

<b>Louisville Metro EMS</b>	<b>Position Detail</b>	
	Mayor's Recommended FY2009-2010	Council Approved FY2009-2010
<b>Position Allocation (in Full-time Equivalent)</b>		
<b>Full-time</b>	<b>284</b>	<b>284</b>
<b>Part-time</b>	<b>8</b>	<b>8</b>
<b>Seasonal/Other</b>	<b>0</b>	<b>0</b>
<b>Total Positions</b>	<b>292</b>	<b>292</b>

***Position Title***

Accounting Clerk	7	7
Administrative Assistant	1	1
Assistant Director	2	2
Billing Clerk III	1	1
Business Specialist	2	2
Emergency Medical Technician	156	156
EMS - Manager	1	1
EMS Fleet Technician	1	1
EMT - Paramedic	97	97
EMT - Paramedic II	13	13
Executive Administrator	2	2
Executive Director	1	1
Fee Collection Supervisor	1	1
Fleet Manager	1	1
Storekeeper I	3	3
Storekeeper II	1	1
Systems Analyst	1	1
Training Specialist	1	1