

June 19, 2007
2007 Louisville, MSA 8-Hr Ozone Monitoring Report
(Data are not quality assured)

Table 1: 2007 8-Hr Ozone Monitoring Summary Report

➤ 8-hour exceedances - 8 exceedances

8-Hour FCST AQI /Max. ppb	# 8-Hour Exceedances	# of Day with Exceedances	Date	New Albany (NA) Floyd Co. IN	Bates (BA) Jefferson Co. KY	Watson (WS) Jefferson Co. KY	WLKY-TV (WK) Jefferson Co. KY	Buckner (BK) Oldham Co. KY	Shepherdsville (SH) Bullitt Co. KY	# AQAs
			5/21/2007	76	78	76	78	83	<u>77</u>	
111 / 89			5/22/2007	76	76	<u>79</u>	<u>77</u>	77	78	1
111 / 89			5/23/2007	66	70	65	66	73	69	2
105 / 86			5/24/2007	60	70	65	63	73	69	3
106 / 87			5/30/2007	59	59	62	63	67	59	4
			6/11/2007	<u>77</u>	71	82	73	81	72	
	1	1	6/12/2007	84	<u>77</u>	85	78	83	76	
103 / 85			6/13/2007	78	76	82	75	<u>82</u>	76	5
103 / 73			6/14/2007	63	57	73	61	67	55	6
127/88	2	1	6/17/2007	79	85	75	79	88	78	7
105/72			6/18/2007	58	64	57	59	72	58	8
Total- 2 days / 3 Exceed- ances	3	2		0	1	1	0	1	0	

Notes: An 8-hour average of 85 ppb or greater exceeds the new ozone standard. AQA: Air Quality Alert. FCST – Forecast.
Bold –greater than 84 ppb. Underline-4th max

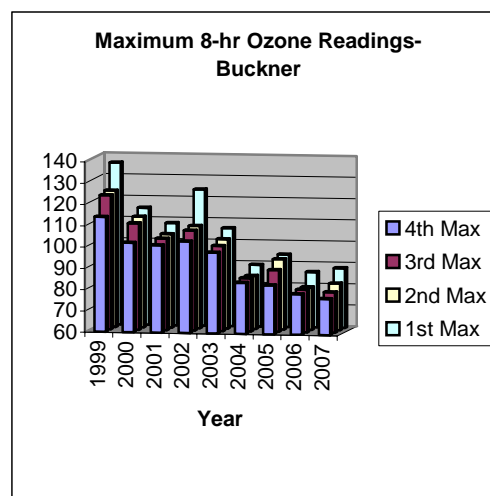
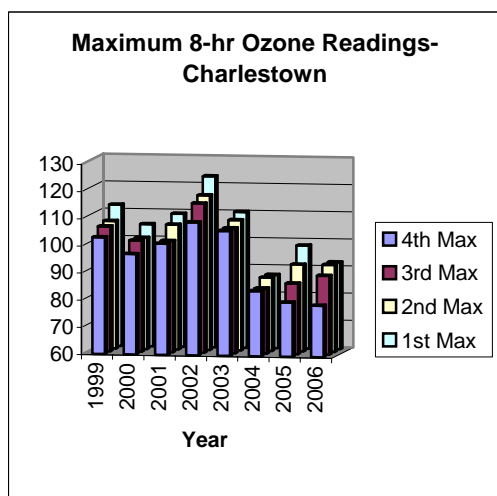


Table 2: Louisville 1998 – 2007 8-Hr Exceedance Summary

Year	Charlestown	New Albany	Bates	Watson	WLKY-TV	Buckner	Shep.	Louisville MSA Total		Jefferson County Total	
								Exceedances	Days	Exceedances	Days
1998	22	14	10	11	7	12	12	88	30	28	15
1999	11	10	16	13	4	34	11	99	44	33	22
2000	4	0	5	1	3	4	2	19	10	9	6
2001	4	0	2	1	1	4	2	14	10	4	3
2002	17	13	4	15	7	12	10	78	26	26	19
2003	4	4	1	0	0	2	0	11	7	1	1
2004	0	0	1	0	0	0	1	2	2	1	1
2005	3	2	0	4	1	4	0	14	8	5	4
2006	3	1	0	1	0	3	0	8	6	1	1
2007	*	0	1	1	0	1	0	3	2	2	2

*Site is shutdown.

8-hr Ozone Exceedances

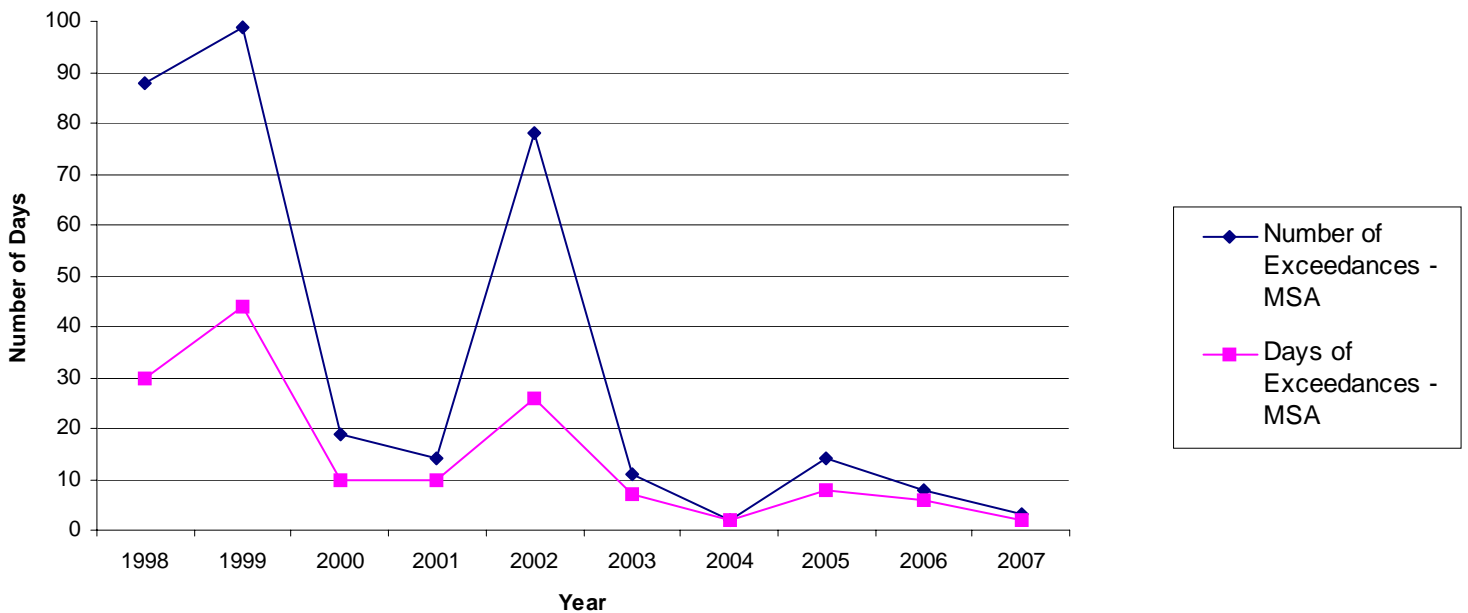


Table 3: 8-Hr Ozone 4th Maximum

Year	Louisville, MSA	Charles-Town (CH)	New Albany (NA)	Bates (BA)	Watson (WS)	WLKY-TV (WK)	Buckner (BK)	Shepherds-ville (SH)
2007	82	*	77	77	79	77	82	77
2006	83	79	76	74	77	67	83	71
2005	89	80	80	79	85	74	89	80
2004	76	74	71	70	70	68	76	68
2003	90	90	86	72	75	73	82	72
2002	100	100	97	85	96	88	91	91
2001	86	86	76	81	81	77	86	82
2000	90	85	77	90	76	84	85	82
1999	103	89	94	97	100	86	103	93

*Site is shutdown.

8-Hr Ozone Annual 4th Maximum Reading for Metro Louisville

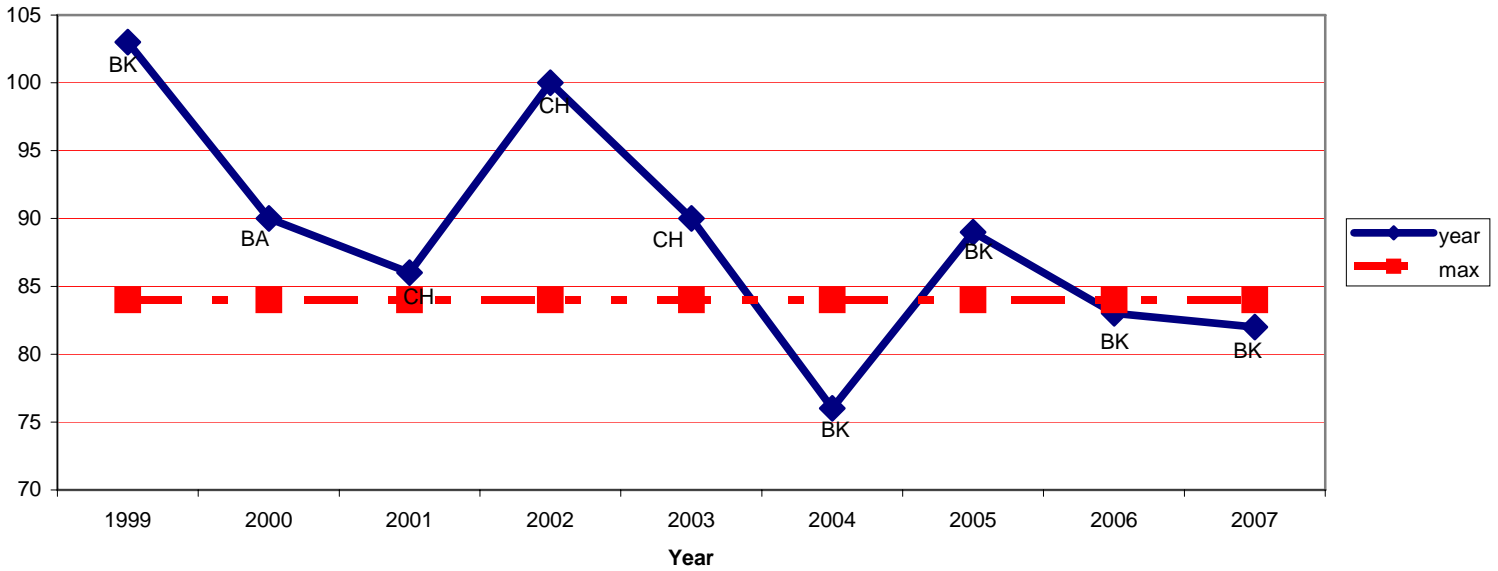
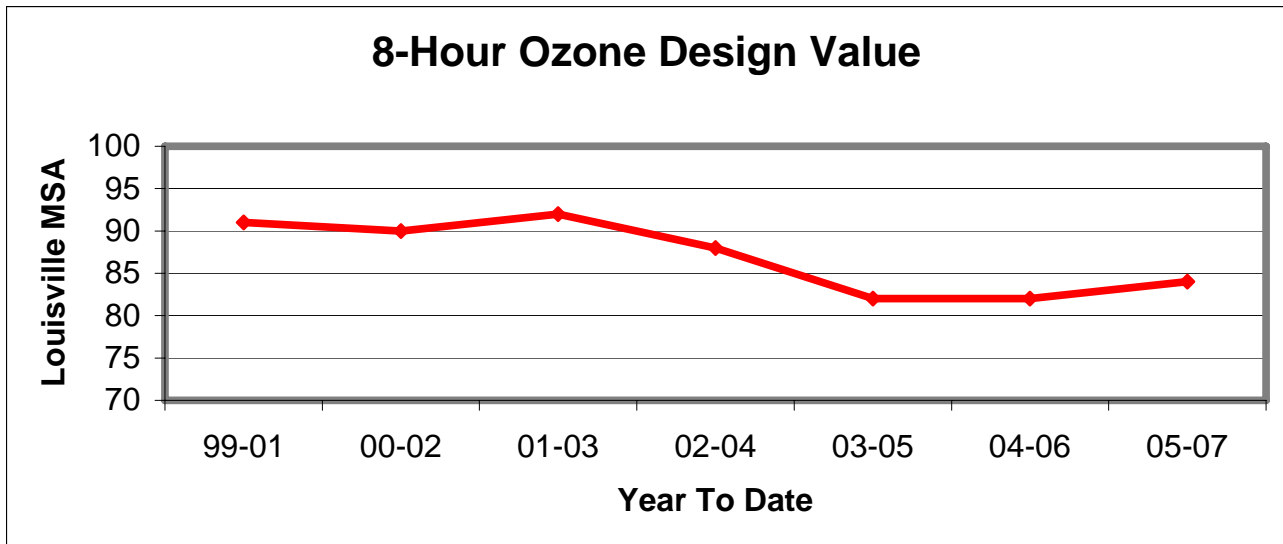


Table 4: 8-Hour Ozone Design Value Summary

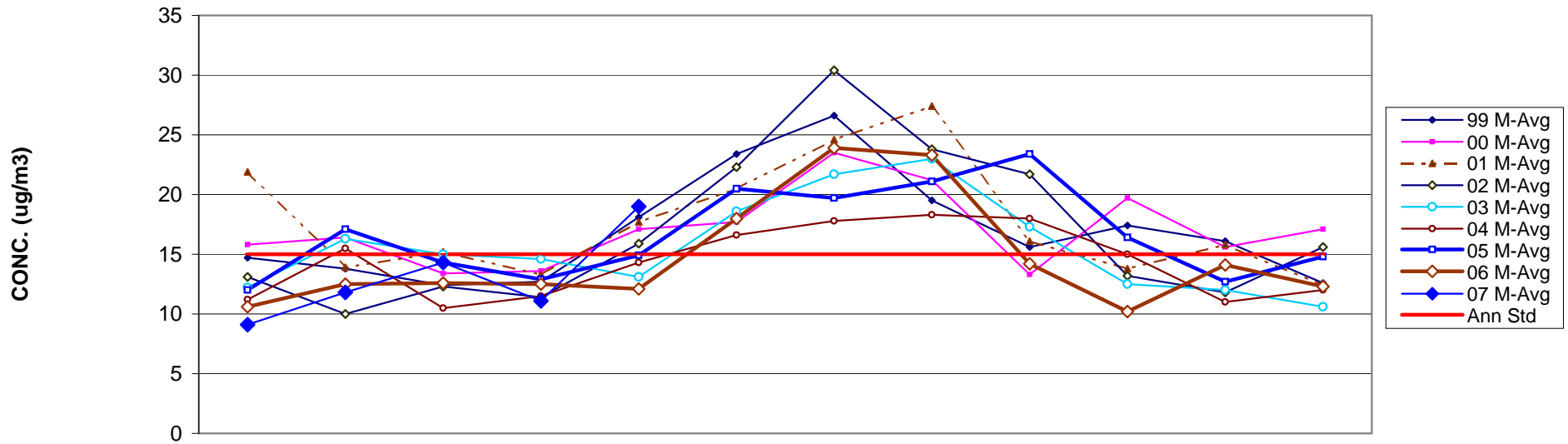
Year	Louisville, MSA	Charlestown	New Albany	Bates	Watson	WLKY-TV	Buckner	Shepherdsville
05-07 Avg.	84 BK	*	77	76	80	72	84	76
04-06 Avg.	82 BK	77	75	72	77	69	82	73
03-05 Avg.	82 BK	81	79	73	76	71	82	73
02-04 Avg.	88 CH	88	84	74	80	76	82	77
01-03 Avg.	92 CH	92	86	77	84	79	86	81
00-02 Avg.	90 CH	90	83	85	84	83	87	85
99-01 Avg.	91 BK	86	82	89	85	82	91	85

Bold –Design Value Sites for respective periods.

8-Hr NAAQS: Attainment of the 8-Hr Ozone National Ambient Air Quality Standard (NAAQS) at an individual monitor is achieved when the three-year average of the annual fourth-highest daily maximum (4th maximum) 8-hr average ozone concentration is less than or equal to 84 ppb. This three-year average is the design value for that monitor.



LOUISVILLE METRO FRM PM2.5 MONTHLY AVERAGES TRENDS FOR 1999 - 2007



	Jan	Feb	Mar	Apr	May	Jun	Jul	Aug	Sep	Oct	Nov	Dec
99 M-Avg	14.7	13.8	12.4	12.7	18.1	23.4	26.6	19.5	15.6	17.4	16.1	12.6
00 M-Avg	15.8	16.4	13.4	13.6	17.1	17.7	23.5	21.2	13.3	19.7	15.6	17.1
01 M-Avg	21.9	13.9	15.2	13.3	17.7	20.5	24.6	27.4	16.1	13.8	15.8	12.4
02 M-Avg	13.1	10	12.3	11.4	15.9	22.3	30.4	23.8	21.7	13.2	11.8	15.6
03 M-Avg	12.2	16.3	15	14.6	13.1	18.6	21.7	23	17.3	12.5	12	10.6
04 M-Avg	11.2	15.5	10.5	11.5	14.3	16.6	17.8	18.3	18	15	11	12
05 M-Avg	12	17.1	14.3	12.9	14.9	20.5	19.7	21.1	23.4	16.4	12.7	14.8
06 M-Avg	10.6	12.5	12.6	12.5	12.1	18	23.9	23.3	14.2	10.2	14.1	12.3
07 M-Avg	9.1	11.8	14.3	11.1	19							
Ann Std	15	15	15	15	15	15	15	15	15	15	15	15

MONTH