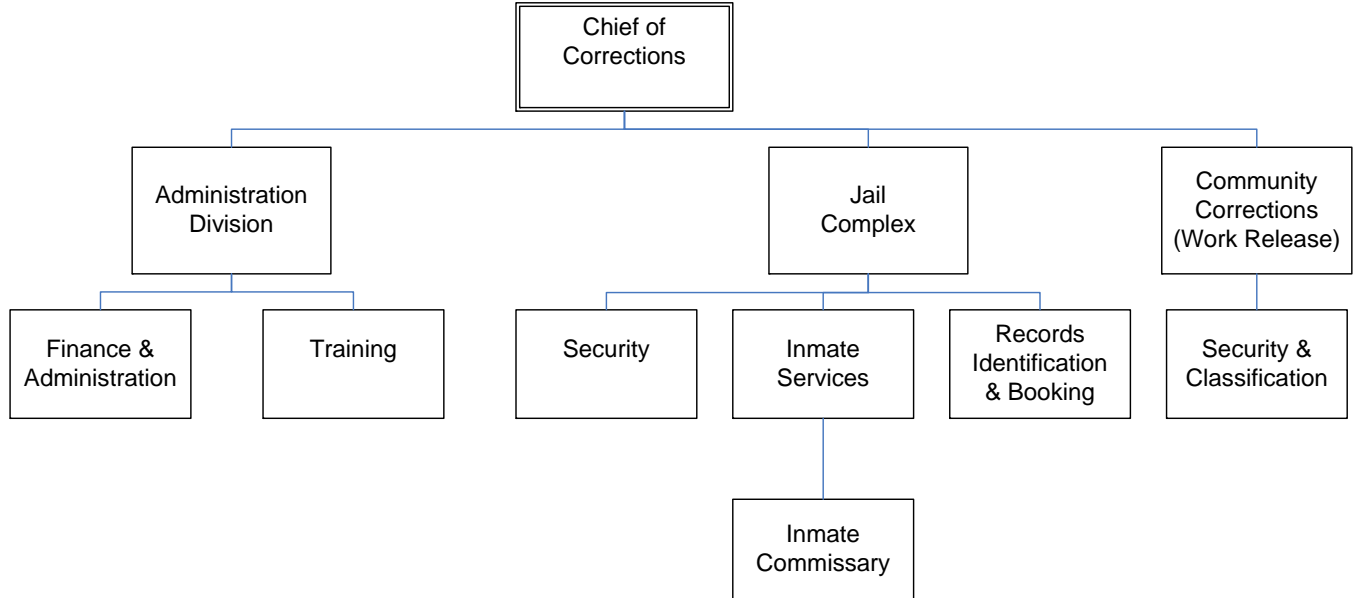




Metro Corrections



METRO CORRECTIONS

Mission

Division Vision: Metro Corrections is an innovative leader within the corrections profession, and is an integral component of the criminal justice system. The Louisville-Metro community is a safer place to live and work because Metro Corrections provides services and programs that allow for appropriate management and supervision of offenders.

Division Mission: Metro Corrections enhances public safety by controlling and managing offenders in a safe, humane, and cost-efficient manner, consistent with sound correctional principles and constitutional standards.

Metro Corrections is committed to excellence, emphasizing accountability, diversity, integrity and professionalism. The division will assess an offender's needs and provide services that assist the offender in transition and reintegration back into the community.

Programs and Services

Finance & Administration: Support operations through budgeting, payroll, purchasing, human resources and accreditation status oversight. Provide effective information management and media relations. Conduct internal affairs investigations when required.

Training: Ensure all staff are trained in the skills necessary to effectively carry out the duties and responsibilities of their respective positions.

Security: Ensure the safety of the public, employees and inmates by operating safe and secure facilities.

Inmate Services: Provide quality services for the inmate population that include education, job training, substance abuse/alcohol counseling, domestic violence counseling, reentry preparation and spiritual needs. Operate a Home Incarceration Program (HIP), a Work Release Program and administer a twelve-week parenting and personal responsibility program called Turning It Around (TIA). Monitor compliance for individuals who are court ordered to participate in anger management and substance abuse counseling in our Court Monitoring Center (CMC).

Records, Identification & Booking: Secure personal property during incarceration and maintain current, accurate records of all inmates through a system of booking and release recorded in the Inmate Management System.

Community Corrections Center: To operate a restricted custody facility with emphasis placed on work release, reentry and transitional services.

METRO CORRECTIONS

Goals & Indicators

Provide a safe and secure detention facility. Provide alternative detention sanctions for qualified individuals to lessen the direct negative impact on their lives and the community. Provide proper training for Corrections staff in the performance of their duties, thus reducing liability and impact of litigation. Provide health care and proper nutrition as mandated by KRS and jail standards. Provide proper treatment as mandated by the courts, KRS and jail standards.

Goal #1: Provide leadership in public safety and ensure model practices in the control, supervision and management of offenders.

Measurement: Adequately supply medical, food, laundry and maintenance services.

Goal #2: Promote the Corrections profession and staff development.

Measurement: The Training Division is one of two jail training departments in the country accredited by the American Correctional Association (ACA). All employees will receive all annual mandated training within pre-determined guidelines. Corrections will strive to achieve departmental accreditation through ACA by adherence to mandated national standards.

Goal #3: Develop and implement quality programs and services that provide offenders the opportunity for positive change.

Measurement: Treatment opportunities for drug/alcohol services will be expanded through contractual services, LMDC staff and volunteers. Emphasis will also continue to be placed on education programs in collaboration with the Jefferson County School Adult Education Program. Support alternative programs such as the Home Incarceration Program, Misdemeanor Intensive Probation, Pre-trial Diversion Program and Court Monitoring Center in an effort to reduce jail overcrowding. Expand reentry programs to better prepare inmates for a successful reintegration back into society.

Goal #4: Create and consistently enforce sound security and operational practices to ensure a safe and healthy environment.

Measurement: Inmate grievances and assaults will be maintained within acceptable jail standard guidelines.

Metro Corrections

Budget Summary

	Prior Year Actual 2006-2007	Original Budget 2007-2008	Revised Budget 2007-2008	Mayor's Recommended 2008-2009	Council Approved 2008-2009
General Fund Appropriation	40,848,300	44,289,800	44,484,100	47,816,200	47,270,300
Agency Receipts	2,623,100	3,028,000	2,840,000	2,848,900	2,814,500
Federal Grants	127,000	130,000	130,000	150,000	150,000
State Grants	253,500	236,000	236,000	200,700	200,700
Total Revenue:	43,851,900	47,683,800	47,690,100	51,015,800	50,435,500
Personal Services	32,180,200	34,596,300	34,570,000	36,411,700	35,831,400
Contractual Services	8,412,600	9,410,600	9,362,400	10,920,800	10,920,800
Supplies	1,934,500	2,051,200	2,011,000	2,288,700	2,288,700
Equipment/Capital Outlay	42,800	267,900	245,900	41,700	41,700
Interdepartment Charges	1,271,700	1,357,800	1,334,600	1,352,900	1,352,900
Restricted & Other Proj Exp	0	0	166,200	0	0
Total Expenditure:	43,841,800	47,683,800	47,690,100	51,015,800	50,435,500
Expenditures By Activity					
Administration Division	2,442,600	2,816,700	2,816,700	2,937,700	2,903,100
Jail Complex Division	35,649,600	38,586,300	38,659,900	41,475,500	41,028,100
Community Corrections Center Division	5,749,600	6,280,800	6,213,500	6,602,600	6,504,300
Total Expenditure:	43,841,800	47,683,800	47,690,100	51,015,800	50,435,500

Metro Corrections	Position Detail	
	Mayor's Recommended FY2008-2009	Council Approved FY2008-2009
Position Allocation (in Full-time Equivalent)		
Sworn	478	478
Full-time	141	141
Permanent Part-time	0	0
Seasonal/Other	0	0
Total Positions	619	619

Position Title

Account Clerk Typist	1	1
Administrative Clerk	1	1
Business Manager I	1	1
Business Manager II	1	1
Chaplain	1	1
Chief of Corrections	1	1
Clerk Typist I	1	1
Clerk Typist II	5	5
Correction Officer	388	388
Corrections Captain	6	6
Corrections Clerk	11	11
Corrections Lieutenant	19	19
Corrections Major	1	1
Corrections Sergeant	54	54
Corrections Supervisor I	8	8
Corrections Supervisor II	3	3
Corrections Support Coordinator	1	1
Corrections Support Technician	3	3
Corrections Technician	7	7
Criminal Justice Supervisor	1	1
Data Systems Analyst	2	2
Data Systems Operator	2	2
Deputy for Corrections	3	3
Executive Assistant	1	1
Fingerprint ID Supervisor I	1	1
Fingerprint ID Technician II	3	3
Fingerprint ID Technician	10	10
Information Systems Analyst	1	1
Information Systems Supervisor	1	1
Inmate Grievance Counselor	2	2
Inventory Control Specialist	2	2
Management Assistant	4	4
Payroll Specialist	1	1
Personnel Specialist	1	1
Personnel Supervisor	1	1
Prisoner Class Interviewer	33	33
Public Information Specialist	1	1
Research Assistant	1	1
Secretary	1	1
Senior Corrections Technician	30	30
Senior Social Worker	1	1
Social Service Program Coordinator	2	2
Substance Abuse Program Coordinator	1	1