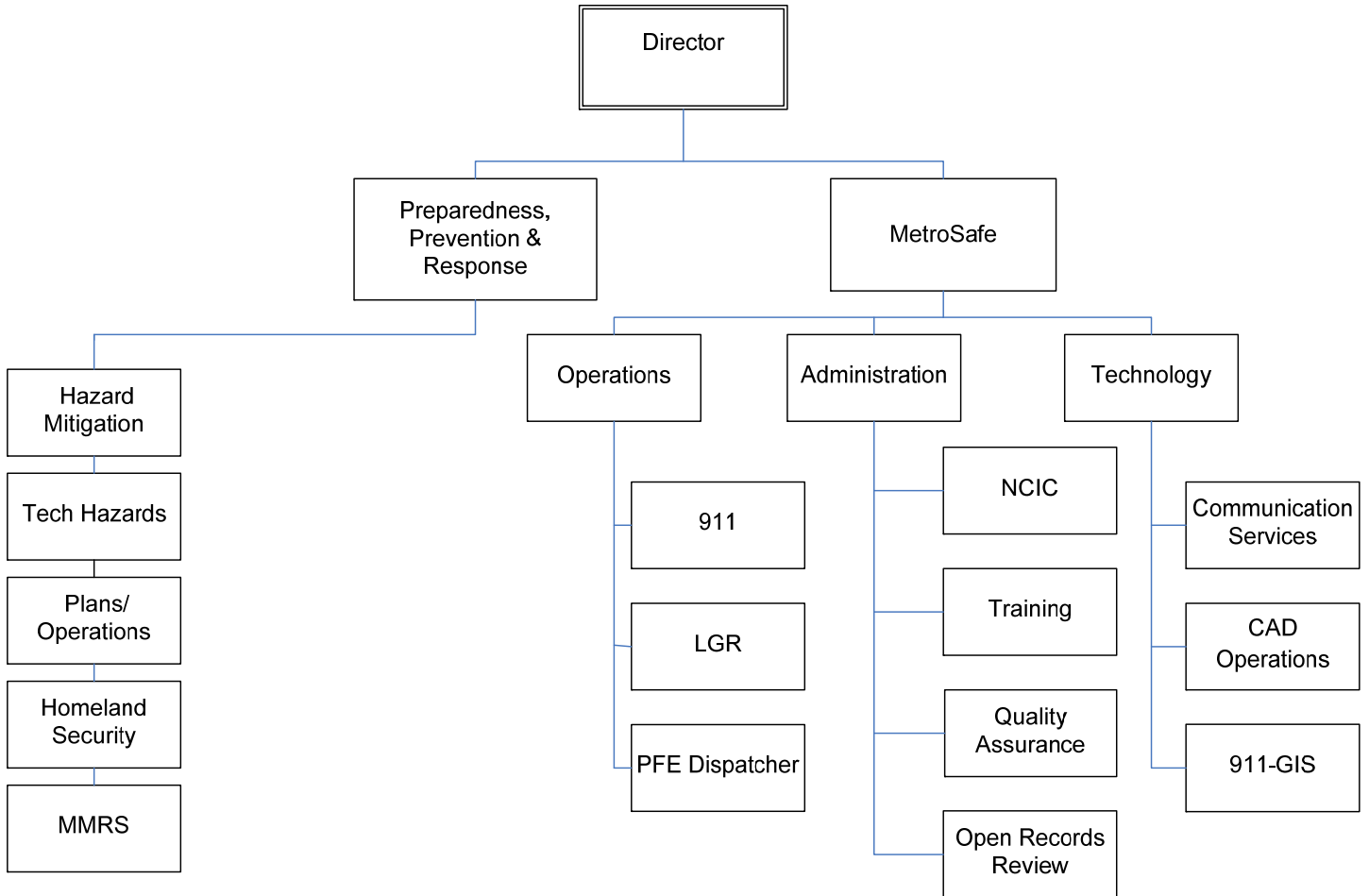




Metro Emergency Management Agency/MetroSafe



EMERGENCY MANAGEMENT AGENCY/METROSAFE

Mission

To provide the citizens and visitors of Louisville Metro an effective, proactive approach to disaster management (natural or caused) through preparedness, planning, prevention and mitigation activities, response coordination, and recovery operations. To provide an emergency call center for receipt, prioritization, dispatch, and coordination of public safety and public service resources required to anticipate, meet, and respond to the needs of our various constituents, both internal and external.

Programs and Services

Preparedness, Prevention, and Response: To mitigate potential hazards and provide prompt and efficient response to emergencies and ensure Louisville Metro public safety assets are properly assigned by providing pre-disaster planning and coordination with local, state, and federal agencies;

- Providing the appropriate training and education to employees;
- Supporting the All-Hazards Mitigation Planning Advisory Committee;
- Managing pilot programs and grants regarding emergency response;
- Coordinating and managing the Floodplain Management Plan; and
- Identifying and tracking the location, transport and storage of hazardous materials within the Louisville Metro area.

Communications (Internal & 911): To provide swift and appropriate response to emergencies and support First Responders by answering and routing all calls for service to the 911 system from the public; providing disaster response coordination; coordinating all requests for new addresses with the 911 Master Street Address Guide; implementing and managing the Computer Aided Dispatch mapping system; and maintaining state-of-the-art, metro-wide, wireless and mobile radio infrastructure to support public safety and public service communications.

EMERGENCY MANAGEMENT AGENCY/METROSAFE

Goals & Indicators

Emergency Operations

- Participate in an all-hazard exercise program based on the National Incident Management System (NIMS) that involves responders from multiple disciplines and jurisdictions.
- Develop Joint Information Center capability.
- Develop a new state-of-the-art Emergency Operations Center.
- Continue development of programs within WebEOC® Crisis Management Software.
- Train personnel from appropriate agencies in ESF assignments and use of WebEOC® in emergency operations.

Floodplain Management

- Continue work with FEMA to lower Community Rating System (CRS) Class Reduction for floodplain management from CRS 5 to CRS 4 resulting in premium reductions for property owners.

Mitigation

- Review and implement 10 mitigation action items identified in All Hazard Mitigation Plan.
- Continue to pursue federal funding for acquisition/demolition of repetitive loss properties through FEMA's Repetitive Flood Claims (RFC) grant program.
- Continue to refine and expand departmental webpage.
- Support Local Emergency Planning Committee (LEPC)/industry in review/submission of Tab Q-7 plans per State Emergency Response Commission (SERC) requirements.

Metropolitan Medical Response System

- Continue development and expand capability/capacity.
- Assist local hospitals in refining operational procedures to increase decontamination capacity/capability.
- Continue to test patient tracking hardware in the region.
- Assist the Healthcare Emergency response association (Region 6) in the creation/implementation of a full-scale Chemical, Biological, Radiological, Nuclear, and Explosive (CBRNE) weapons exercise.
- Develop plan for timely division/distribution of first responder pharmaceutical cache; test plan.
- Work with the Louisville Metro Department of Public Health and Wellness to create a Special Needs Shelter Plan, as well as procure items to support one.
- Incorporate local hospitals into the 800 MHz radio system that Louisville Metro is deploying in late summer or early fall, to include equipment and any necessary training.
- Continue to develop maturity of patient tracking system for multi-casualty incidents.

EMERGENCY MANAGEMENT AGENCY/METROSAFE

Goals & Indicators (continued)

Medical Reserve Corp

- Increase Medical Reserve Corp (MRC) membership by 10%.
- Develop annual training (post initial) requirements for MRC members and implement on-line offering via "TRAIN Kentucky."
- Coordinate with the Louisville Metro Department of Public Health and Wellness to utilize MRC volunteers for public health initiatives.
- Reassess viability of "initial" volunteers at inception of MRC program.
- Develop application packet available via EMA website.

Operations

- Develop new operational 911 facility.
- Refresh and upgrade technology to modernize MetroSafe.
- Merge the Local Government operations into the MetroSafe Communications Center.

Administration

- Review and renew service level agreements with each discipline to promote interagency cooperation in public safety and public service joint projects and initiatives.
- Review training curriculum to ensure that we move towards staff development.
- Improve service expansion with Medical, Police and Fire protocols to be in compliance with NFPA/NENA/APCO standards.

Technology

- Implement new Public Safety Communications 800mhz radio system.
- Develop a MetroSafe Disaster Resistance/Redundancy Infrastructure backup center at 768 Barret Ave.

**Emergency Management
Agency/MetroSafe**

Budget Summary

	Prior Year Actual 2007-2008	Original Budget 2008-2009	Revised Budget 2008-2009	Mayor's Recommended 2009-2010	Council Approved 2009-2010
General Fund Appropriation	10,098,200	10,899,500	10,899,700	9,225,200	9,225,200
Agency Receipts	5,083,300	5,114,900	5,114,900	7,930,100	7,930,100
Federal Grants	430,600	521,500	818,400	2,909,200	2,909,200
State Grants	0	0	0	50,000	50,000
Total Revenue:	15,612,100	16,535,900	16,833,000	20,114,500	20,114,500
Personal Services	11,367,300	11,238,400	11,009,500	12,311,200	12,311,200
Contractual Services	3,480,300	4,477,800	4,378,500	4,647,200	4,647,200
Supplies	150,000	203,100	177,700	148,300	148,300
Equipment/Capital Outlay	244,200	261,900	431,300	282,700	282,700
Interdepartment Charges	370,500	354,700	354,600	327,100	327,100
Restricted & Other Proj Exp	0	0	481,400	2,398,000	2,398,000
Total Expenditure:	15,612,300	16,535,900	16,833,000	20,114,500	20,114,500
Expenditures By Activity					
Preparedness, Prevention, & Response	1,120,800	1,246,700	1,543,600	3,558,300	3,558,300
Communications (Internal & 911)	14,491,500	15,289,200	15,289,400	16,556,200	16,556,200
Total Expenditure:	15,612,300	16,535,900	16,833,000	20,114,500	20,114,500

Emergency Management Agency/MetroSafe	Position Detail	
	Mayor's Recommended FY2009-2010	Council Approved FY2009-2010
Position Allocation (in Full-time Equivalents)		
Full-time	212	212
Part-Time	3	3
Seasonal/Other	0	0
Total Positions	215	215
Position Title		
Administrative Assistant	3	3
Administrative Coordinator	1	1
Administrative Specialist	1	1
Assistant Director	2	2
Business Manager II	1	1
Communication Dispatcher	18	18
Communication Specialist I	48	48
Communication Specialist II	71	71
Communication Specialist III	3	3
Communications Technician I	6	6
Director	1	1
Emergency Communications Coordinator	1	1
Emergency Services Coordinator	3	3
Geographic Information Systems Specialist	4	4
Geographic Information Systems Supervisor	1	1
Information Processing Technician	9	9
Information Systems Supervisor	1	1
Management Assistant I	1	1
Management Assistant II	1	1
Quality Assurance Coordinator	2	2
Radio System Electrical Supervisor I	1	1
Radio System Electrical Supervisor II	1	1
Radio Technician I	10	10
Radio Technician II	6	6
Telecom Supervisor I	15	15
Telecom Supervisor II	2	2
Telecom Training Specialist	2	2