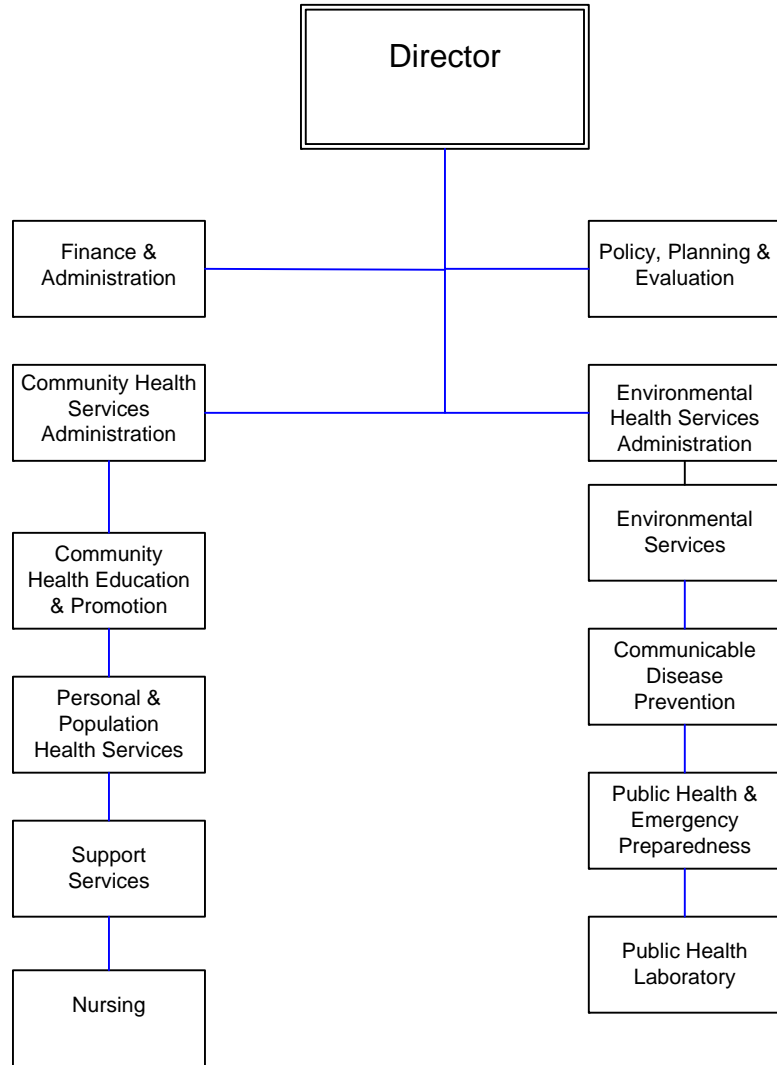




Public Health & Wellness



PUBLIC HEALTH & WELLNESS

Mission

The Department's mission is to protect, preserve and promote the health, environment, and well-being of the people of Louisville Metro, principally through health assessment, policy development, and assurance in an efficient, responsive, ethical and customer friendly manner.

Programs and Services

Finance & Administration: To provide administrative and financial leadership, and support services to the department.

Policy, Planning & Evaluation: To protect and promote the public health by compiling an annual Health Status Assessment Report of the community; coordinating the Mobility for Action through Planning and Partnership (MAPP) community strategic planning process; supporting surveillance and research projects; increasing the capacity of the health department for policy development and informatics; and supporting health department programs in monitoring performance measures and implementing best practices.

Personal & Population Health Administration: To provide leadership and administrative support to its direct and related divisions and staff.

Community Health Education & Promotion: To work collaboratively with community members and partner organizations to inform, educate, and empower people on health matters, provide leadership in collaborative partnerships to find creative solutions to health problems, support evidence-based and promising practices to improve individual and community health, and utilize community events, training and social marketing to increase public awareness of healthy behaviors that result in the prevention of chronic disease.

The Center for Health Equity: To work to define the local causes of health inequities and identify potential local solutions, increase community awareness of inequities, form new partnerships and coalitions with organizations not traditionally associated with public/community health efforts, and investigate and apply best practices that have shown positive results in eliminating health inequities.

PUBLIC HEALTH & WELLNESS

Programs and Services (continued)

Personal & Population Health Services: To improve the quality of life of Louisville Metro residents by ensuring access to services by providing or contracting for preventive health services including childhood immunizations and flu shots, women’s health services, dental, methadone treatment services, early childhood services and screenings, case management services, and a variety of nutrition-related services including the Special Supplemental Nutrition Program for Women, Infants & Children (WIC) for individuals; by operating health centers throughout the region for access to these preventive services; and by offering reduced-fee or subsidized services for citizens in need.

Support Services: To provide information technology support and assistance.

Environmental Services: To protect the environment of the community by providing administrative support to the Environmental Health Services Division; by ensuring the safety of the public food supply; by ensuring adequate sanitation standards; by reducing and eliminating disease vector and nuisance mosquito population; by ensuring the adequate and appropriate community response to hazardous materials; and by mitigating and preventing children’s exposure to lead poisoning.

Communicable Disease Prevention: To protect the health of Louisville Metro citizens by monitoring communicable diseases through education, surveillance, investigation, epidemiology, and by assuring that vaccination and treatment are provided where appropriate.

Public Health & Emergency Preparedness: To ensure rapid, strategic and coordinated response to any public health emergency by preparing health professionals and others in the detection, containment, treatment of affected persons, and mitigation or elimination of the threat to public health.

Public Health Laboratory: To support overall operations by serving as a testing laboratory, by managing and maintaining efficient, quality laboratory services, and by providing emergency preparedness laboratory functions.

PUBLIC HEALTH & WELLNESS

Goals & Indicators

- Implement the Behavior Risk Factor Surveillance System benchmark health status survey.
- Identify and eliminate health inequities in Metro Louisville by the year 2010 through the Center for Health Equity.
- Increase the number of immunized children.
- Reduce the percentage of infant mortality and low-birth weight babies.
- Increase education and outreach efforts to reduce percentage of smokers.
- Reduce obesity rates and increase percentage of people exercising through a health and wellness movement.
- Improve data collection and analysis to identify environmental health indicators, evaluate services, and track improvements.
- Expand the focus of improving men's health.

Public Health & Wellness

Budget Summary

	Prior Year Actual 2006-2007	Original Budget 2007-2008	Revised Budget 2007-2008	Mayor's Recommended 2008-2009	Council Approved 2008-2009
General Fund Appropriation	21,510,000	12,053,200	12,053,200	11,530,800	11,458,500
Agency Receipts	1,902,700	2,753,200	3,207,800	2,307,400	2,257,400
Federal Grants	9,876,700	8,642,800	9,782,400	9,557,400	9,582,700
State Grants	3,153,100	3,287,600	3,259,700	3,333,500	3,231,500
Total Revenue:	36,442,500	26,736,800	28,303,100	26,729,100	26,530,100
Personal Services	15,974,400	16,544,600	16,554,400	16,413,700	16,214,700
Contractual Services	17,474,800	7,828,200	8,742,700	7,487,500	7,487,500
Supplies	1,373,600	1,282,500	1,395,700	1,512,800	1,512,800
Equipment/Capital Outlay	341,900	13,900	1,300	1,100	1,100
Interdepartment Charges	976,700	1,067,600	997,500	979,900	979,900
Restricted & Other Proj Exp	0	0	611,500	334,100	334,100
Total Expenditure:	36,141,400	26,736,800	28,303,100	26,729,100	26,530,100
Expenditures By Activity					
Administration & Support Division	(53,400)	514,200	1,100,100	785,000	785,000
Pop. & Personal Health Services	13,435,300	13,461,500	14,255,700	12,832,300	12,745,600
Env. Health Services Division	10,201,800	12,761,100	12,947,300	13,111,800	12,999,500
Office of Cabinet Secretary	12,557,700	0	0	0	0
Total Expenditure:	36,141,400	26,736,800	28,303,100	26,729,100	26,530,100

Public Health & Wellness	Position Detail	
	Mayor's Recommended FY2008-2009	Council Approved FY2008-2009
Position Allocation (in Full-time Equivalents)		
Full-time	315	315
Permanent Part-time	8	8
Seasonal/Other	28	28
Total Positions	351	351

Position Title

Administrative Assistant	5	5
Administrative Coordinator	3	3
Adv Reg Nurse Practitioner	1	1
Assistant Director	3	3
Business Accountant I	2	2
Business Accountant II	1	1
Business Manager I	2	2
Business Manager II	1	1
Business Office -Temporary Worker	1	1
Business Specialist	1	1
Business Technician	1	1
Clerical Supervisor	1	1
Clerk Typist II	5	5
Community Health Administrator	6	6
Community Health Manager	4	4
Community Health Medical Assistant	19	19
Community Health Nurse Specialist	53	53
Community Health Nurse Supervisor	8	8
Community Health Services Clerk	39	39
Community Health Social Service Assistant I	2	2
Community Health Social Service Assistant II	11	11
Community Health Social Worker	4	4
Community Health Specialist	6	6
Community Health Supervisor	8	8
Data Systems Analyst	1	1
Dentist	4	4
Environmental Engineer Coordinator	1	1
Environmental Health Administrator	1	1
Environmental Health Manager	2	2
Environmental Health Specialist	32	32
Environmental Health Supervisor	4	4
Epidemiologist	7	7
Executive Assistant	1	1
Expanded Functions Dental Assistant	3	3
Grants Contract Coordinator	1	1
Health Education Specialist I	2	2
Health Education Specialist II	12	12
Information Systems Specialist	1	1
Information Systems Supervisor	1	1
Inventory Control Specialist	1	1

Public Health & Wellness	Position Detail	
	Mayor's Recommended FY2008-2009	Council Approved FY2008-2009
Laboratory Assistant	1	1
Laboratory Technician	2	2
Laboratory Technician & General Supervisor	1	1
Laboratory Technologist	5	5
Licensed Practical Nurse	3	3
Local Area Network Analyst	1	1
Management Assistant	16	16
Mosquito Control Officer	7	7
Nutrition Manager	1	1
Nutrition Services Educator	3	3
Nutrition Services Specialist	19	19
Nutrition Supervisor	1	1
Office Worker	1	1
Payroll Specialist	1	1
Plan Reviewer	1	1
Public Information Specialist	1	1
Public Information Supervisor	1	1
Radiologic Technician	1	1
Receptionist	1	1
Secretary	7	7
Secretary/Stenographer	1	1
Senior Substance Abuse Counselor	4	4
Social Service Technician	1	1
Substance Abuse Counselor	1	1
Substance Abuse Supervisor	2	2
Swimming Pool Programmer	3	3
Technology Cabinet Administrator	1	1
Training Coordinator	1	1
Translator	1	1
Vital Statistics Specialist	1	1